



# MONUMENT NATIONAL

## Studio Hydro-Québec

### TECHNICAL RIDER 2020-21

#### GENERAL INFORMATION

<b>Address</b>	1182, boulevard Saint-Laurent Montréal, QC H2X 2S5
<b>Telephone</b>	(514) 871-8298
<b>Email</b>	<a href="mailto:info@monumentnational.com">info@monumentnational.com</a>
<b>Rentals &amp; Partnerships</b>	Guillaume Fontaine <a href="mailto:location@monumentnational.com">location@monumentnational.com</a> (514) 871-9883, ext. 227
<b>Technical Direction</b>	Valérie Ménard <a href="mailto:directiontechniquemn@ent-nts.ca">directiontechniquemn@ent-nts.ca</a> (514) 871-8298, ext. 236
<b>Maximum capacity</b>	150
<b>Production Office</b>	None, but an area can be set up for this purpose.
<b>Control Booth</b>	On the second floor
<b>Dressing rooms (Green Room)</b>	Ground floor, situated around the venue
<b>Security</b>	<b>Technical personnel must wear steel-toed footwear.</b>  <b>Wearing a safety helmet is mandatory when working at a height.</b>  <b>A safety harnesses is mandatory for anyone working at a height greater than 10' measured from the floor.</b>

# VENUE

## **BLEACHERS**

This venue, commonly known as the “Black Box,” is rented without preconfigured seating.

A variety of audience layouts are possible, for example:

### Italian Style

This basic Italian-style audience layout consists of a set of 20 risers, 3' X 6' each, arranged into four rows. Depending on the intended stage setup, our riser system can accommodate up to 84 chairs, and we can put an additional 26 chairs in the gallery, for a total of 110 seats.

### Cabaret Style

For cabaret-style seating, we can offer the following furniture:

30 tables, 20” in diameter  
8 tables 15” in diameter  
150 chairs

## **DIMENSIONS**

<b>Wall to wall</b>	Width: .....	43'
	Depth: .....	52'
<b>Between galleries</b>	Width: .....	30'
	Depth: .....	44'
<b>Grid height</b>	.....	26'
<b>3 bridge cranes</b>	Clearance beneath bridges: .....	19'

1 perimeter corridor that can serve as backstage and wings.

## **LOADING DOCK**

A street-level loading dock is located at 1170 Saint-Laurent Boulevard and provides access to a freight elevator with a load capacity of up to 12,000 lb (5,455 kg). The elevator serves the basement, ground floor, trap room, and stage.

### **Freight elevator dimensions**

Width: .....	92”
Height: .....	95”
Depth: .....	22’

### **Studio access for sets: Door dimensions**

Width: .....	60”
Height: .....	80”

## **STAGE CURTAINS**

4 borders:		
Height: .....	5'	
Width: .....	30'	
Black, flame-retardant (FR) velvet		
8 legs:		
Height: .....	17'2"	
Width: .....	13'	
Black FR velvet		
2 backdrops:		
Height: .....	17'2"	
Width: .....	18'	
Black FR velvet		
2 pleated curtains, 50% fullness		
Height: .....	17'2"	
Width: .....	18'	
Black FR velvet		
1 black Scrim		
Height: .....	17'2"	
Width: .....	30'	
1 white Cyclorama		
Height: .....	34'	
Width: .....	45'	
Full scrim		
10 contour curtains – Parterre		
Height: .....	6'10"	
Width: .....	10"	
Black FR velvet		
18 contour curtains – Mezzanine		
Height: .....	6'5"	
Width: .....	10"	
Black FR velvet		
9 contour curtains – Gallery		
Height: .....	6'2"	
Width: .....	10"	
Black FR velvet		

## **RISERS**

40	3' x 6' platforms (can be used to create a raised stage or bleachers) Includes sets of legs: 8", 16", 24", 32", and 40"
----	--

## **BACKSTAGE FACILITIES**

- 2 Dressing rooms for 2 people
- 2 Dressing rooms for 4 people
- 1 Green Room
- 1 utility room (includes iron and ironing board)

## **LIGHTING EQUIPMENT**

### **CONSOLE AND DIMMERS**

- 1 Strand Palette VL console
- 144 Dimmers 2.4 kW, GTL 20 amp. output terminals

### **RIGGING POSITIONS**

- 3 Bridge cranes (clearance under bridges: 19' from the ground up)
- 1 Permanent tubular grid at 26'
- 2 Permanent ground-level linesets close the walls (north and south sides)
- 2 Permanent linesets under the gallery near the stage (north -south and east-west)

### **LIGHTING**

- 8 Lekos SL 19 575 Watts
- 15 Lekos SL 26 575 Watts
- 25 Lekos SL 36 575 Watts
- 8 Lekos SL 50 575 Watts
- 40 Strand 6" 1kW Fresnelite w/ barndoors
- 8 Strand 8" 2kW Fresnelite w/ barndoors
- 24 Pars 64 1 kW Altman – VN / N / Med / Wide
- 24 Strand IRIS 1, 1kW

### **MISCELLANEOUS**

- 10 Booms – from 2' to 16'
- Complete set of cables, Socapex and twofers

### **MISCELLANEOUS (RENTAL FEES)**

- Lee and Roscolux gel filters
- 1 MDG ATMOSPHERE Fog Generator (smoke machine)

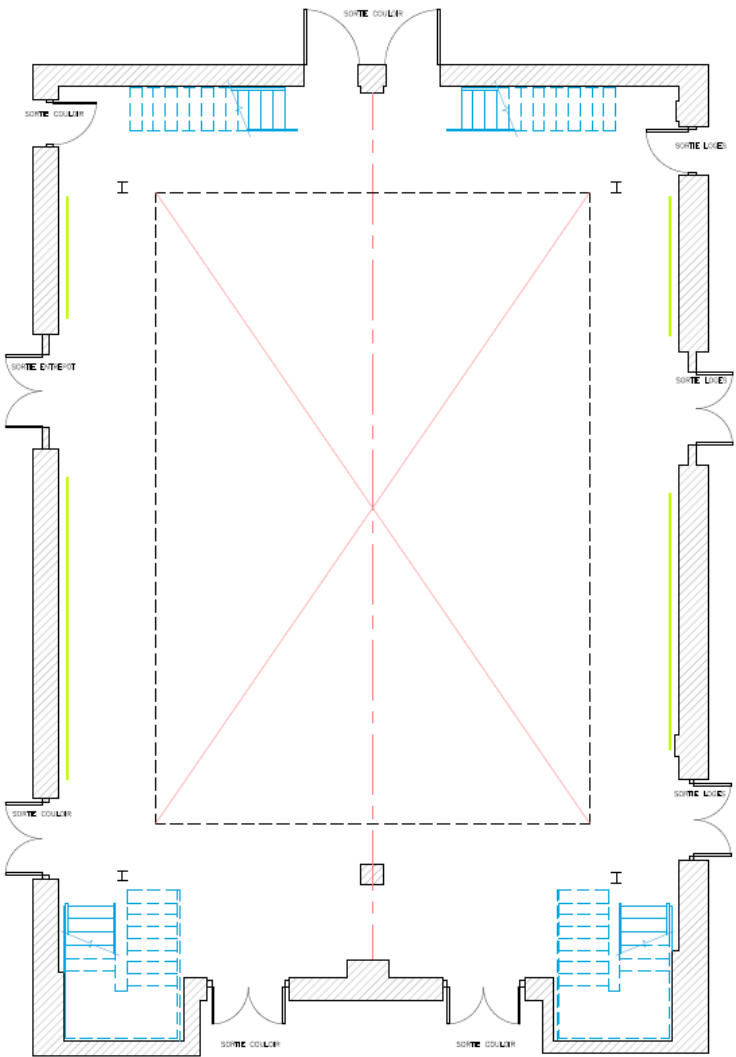
## SOUND EQUIPMENT

### **MIXING CONSOLES AND EQUIPMENT**

- 1 Yamaha LS-9 / 32 Channel Digital Mixing Console 16 OMNI-output
- 1 DENON DN 2000F Dual CD player
- 2 Shure SM-58 microphones
- 3 Mono Passive DI units
- 1 Stereo Passive DI unit

### **SPEAKERS AND COMMUNICATION SYSTEM**

- 4 Full-range Meyer UPA-1P compact loudspeakers (movable) w/ Meyer Galileo 408 loudspeaker management system
- 2 Meyer USW-1P Subwoofers (movable) controlled by the above management system
- 4 Full-range EAW LA 212 loudspeakers
- 1 Amp rack for EAW LA 212 w/ (2) Crown POWER-TECH 3 amp
- 4 Yamaha MSR 400 speakers (preconfigured internal amp)
- 2 JBL Control 1 Pro booth monitors w/ (1) Samson Servo 150 Power Amplifier
- 1 Multi-zone paging system for dressing rooms and/or lobby consisting of:
  - (1) multi-channel amp: TOA A-912 MK2 II 900 series
  - (3) 70-Volt extension speakers
  - (1) TOA paging mic
- 1 Clear-Com 2-channel headset system, includes (4) beltback user stations and (1) remote speaker station



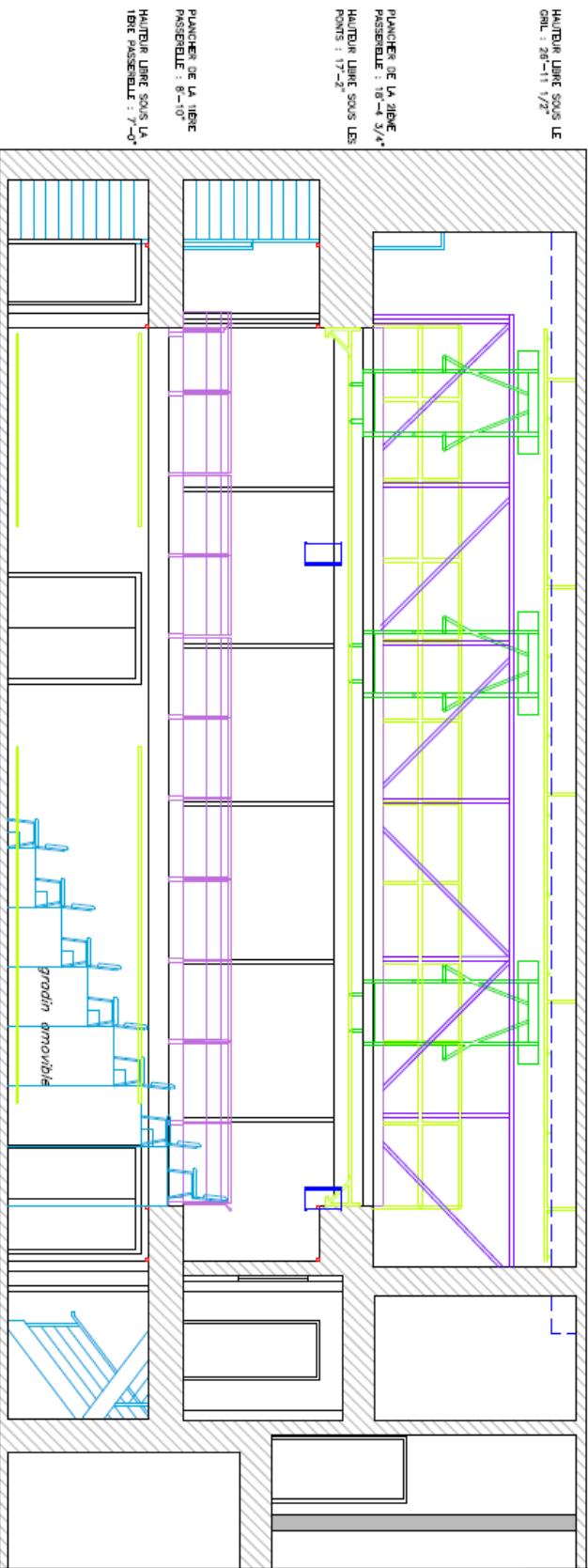
**MONUMENT  
NATIONAL**

Studio Hydro-Québec  
plan du parterre

Monument National

Révision  
SEPT 2020

Echelle  
1/4"=1'  
Page  
1/4



Coupe longitudinale

Monument National, Studio Hydro-Québec

**The Monument-National forms one of two campuses of the National Theatre School of Canada.**

- Located near the corner of Saint-Laurent and René-Lévesque Boulevards, it is within walking distance of both the Saint-Laurent and Place-d'Armes metro stations.
- The main entrance and Box Office are located at 1182 Saint-Laurent Boulevard; The reception staff and backstage entrance is located at 1170 Saint-Laurent Boulevard.
- It was built in 1893 and entirely renovated in 1993 for its centennial anniversary.
- The Box Office is managed by the Monument-National and powered by Tuxedo ([monumentnational.tuxedobillet.com](http://monumentnational.tuxedobillet.com)).