



Studio Hydro-Québec

TECHNICAL RIDER

GENERAL INFORMATION

Address	1182 Saint-Laurent Boulevard, Montreal, QC H2X 2S5
Telephone	514-871-9883
Email	info@monumentnational.com
Operations Lead	Karine Daviau kdaviau@ent-nts.ca 514-871-9883, ext. 228
Technical Direction	Philippe Almeras palmeras@ent-nts.ca 514-871-9883, ext. 236
Maximum capacity	80-150
Production Office	None, but an area can be set up for this purpose.
Control Booth	On the second floor
Dressing rooms (Green Room)	Ground floor, situated around the venue
Security	Technical personnel must wear steel-toed footwear. Wearing a safety helmet is mandatory when working at a height. A safety harnesses is mandatory for anyone working at a height greater than 10' measured from the floor.

VENUE

BLEACHERS

This venue, commonly known as the “Black Box,” is rented without preconfigured seating.

A variety of audience layouts are possible, for example:

Italian Style

This basic Italian-style audience layout consists of a set of 20 risers, 3' X 6' each, arranged into four rows. Depending on the intended stage setup, our riser system can accommodate up to 84 chairs, and we can put an additional 26 chairs in the gallery, for a total of 110 seats.

Cabaret Style

For cabaret-style seating, we can offer the following furniture:

30 tables, 20" in diameter
8 tables 15" in diameter
150 chairs

DIMENSIONS

Wall to wall	Width:	43'
	Depth:	52'
Between galleries	Width:	30'
	Depth:	44'
Grid height	26'
3 bridge cranes	Clearance beneath bridges:	19'

1 perimeter corridor that can serve as backstage and wings.

LOADING DOCK

A street-level loading dock is located at 1170 Saint-Laurent Boulevard and provides access to a freight elevator with a load capacity of up to 12,000 lb (5,455 kg). The elevator serves the basement, ground floor, trap room, and stage.

Freight elevator dimensions

Width:	92"
Height:	95"
Depth:	22'

Studio access for sets: Door dimensions

Width:	60'
Height:	80"

STAGE CURTAINS

4 borders:		
Height:	5'
Width:	30'
Black, flame-retardant (FR) velvet		
8 legs:		
Height:	17'2"
Width:	13'
Black FR velvet		
2 backdrops:		
Height:	17'2"
Width:	18'
Black FR velvet		
2 pleated curtains, 50% fullness		
Height:	17'2"
Width:	18'
Black FR velvet		
1 black Scrim		
Height:	17'2"
Width:	30'
1 white Cyclorama		
Height:	17'2"
Width:	45'
Full scrim		
10 contour curtains – Parterre		
Height:	6'10"
Width:	10"
Black FR velvet		
18 contour curtains – Mezzanine		
Height:	6'5"
Width:	10"
Black FR velvet		
9 contour curtains – Gallery		
Height:	6'2"
Width:	10"
Black FR velvet		

RISERS

30 3' x 6' platforms (can only be used for bleachers) with 16", 32", 48", 64", 80" and 96" legs

ON DEMAND

40 3' x 6' platforms (can be used to create a raised stage or bleachers)
Includes sets of legs: 8", 16", 24", 32", and 40"

BACKSTAGE FACILITIES

- 2 Dressing rooms for 2 people
- 2 Dressing rooms for 4 people
- 1 Green Room
- 1 utility room (includes iron and ironing board)

VIDEO

- 1 Panasonic PT-DW6300 (6K) projector
- 1 ET-DLE250 lens
- 1 ET-DLE 150 lens

HDMI/3G-SDI bidirectional converters with SDI, HDMI, VGA and CAT 6 cables on demand

LIGHTING EQUIPMENT

CONSOLE AND DIMMERS

- 1 ETC ION Xe 20 console
- 144 Dimmers 2.4 kW, GTL 20 amp. output terminals

RIGGING POSITIONS

- 3 Bridge cranes (clearance under bridges: 19' from the ground up)
- 1 Permanent tubular grid at 26'
- 2 Permanent ground-level linesets close the walls (north and south sides)
- 2 Permanent linesets under the gallery near the stage (north -south and east-west)

LIGHTING

- 8 Lekos SL 19 575 Watts
- 15 Lekos SL 26 575 Watts
- 25 Lekos SL 36 575 Watts
- 8 Lekos SL 50 575 Watts
- 40 Strand 6" 1kW Fresnelite w/ barndoors
- 8 Strand 8" 2kW Fresnelite w/ barndoors
- 24 PAR ETC 575W VN / N / Med / Wide
- 24 Strand IRIS 1, 1kW

TOUR TIE IN

- 1 200A, 120/208V, 3 phases Cam-Lock (Technical cat walk)

MISCELLANEOUS

- 14 Booms – various hight
- Complete set of cables, Socapex and twofers
- 15 side arms
- 20 floor bases
- 1 Genie Lift AWP-25S

MISCELLANEOUS (RENTAL FEES)

- Lee and Roscolux gel filters
- 1 MDG ATMOSPHERE Fog Generator (smoke machine)

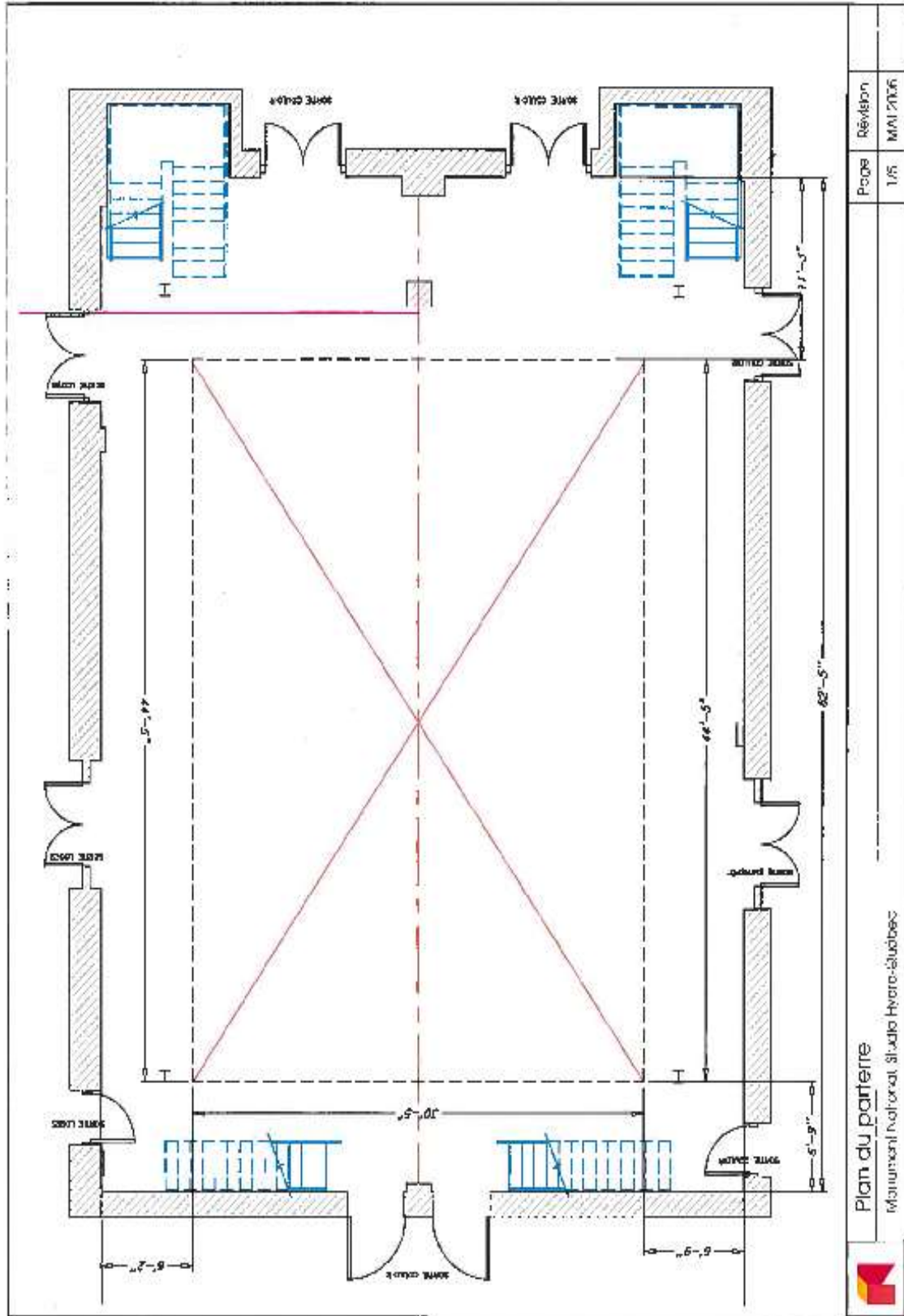
SOUND EQUIPMENT

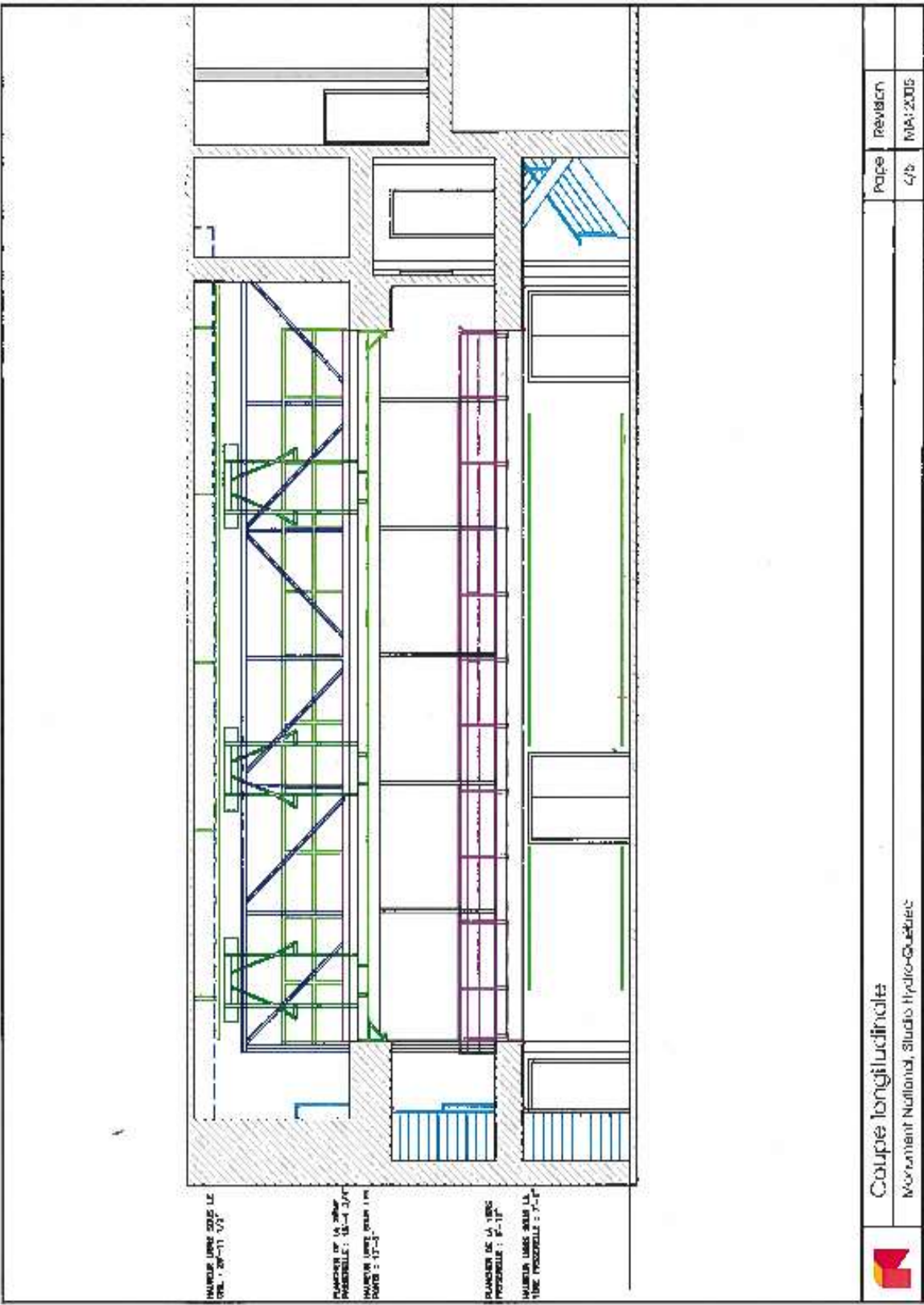
MIXING CONSOLES AND EQUIPMENT

- 1 Allen & Heath SQ-7 / 32 Channel Digital Mixing Console 16 OMNI-output
- 1 DENON DN 2000F Dual CD player
- 2 Shure SM-58 microphones
- 1 Switch microphone for stage manager
- 2 Tall Atlas microphone stands
- 3 Mono Passive DI units
- 1 Stereo Passive DI unit

SPEAKERS AND COMMUNICATION SYSTEM

- 4 Meyer UPA-1P (movable, but set to the four corner by default)
- 2 Meyer USW-1P (movable)
- 4 EAW LA 212 (movable)
- 4 Yamaha MSR 400 with stands and rigging
- 2 JBL Control (booth monitors)
- 1 Multi-zone paging system for dressing rooms and/or lobby
- 1 Clear-Com 2-channel system, includes (10) beltpack and (1) remote speaker station





The Monument-National forms one of two campuses of the National Theatre School of Canada.

- Located near the corner of Saint-Laurent and René-Lévesque Boulevards, it is within walking distance of both the Saint-Laurent and Place-d'Armes metro stations.
- The main entrance and Box Office are located at 1182 Saint-Laurent Boulevard; The reception staff and backstage entrance is located at 1170 Saint-Laurent Boulevard.
- It was built in 1893 and entirely renovated in 1993 for its centennial anniversary.
- The Box Office is managed by the Monument-National and powered by Tuxedo (monumentnational.tuxedobillet.com).

AVAILABLE FOR RENTING			Per Day
Qty.	Item	Notes	
12	MSR-100	Speakers	20
8	QSC K8.2	Speakers	30
2	AKG 414	Mic Kit	100
2	Rode NTG-2		
3	Shure Beta 98		
6	Shure SM-57		
2	Sennheiser MD421		
1	Shure Beta 52A		
2	Shure SM-81		
1	Apex 435		
2	Panasonic	Video projector 10k Laser	800
2	Christie	Video projector 10k	500
2	MDG	Smoke Machine	25
3	Robin 300 LED Wash	Mooving	100
2	Robe Mni Pointe	Mooving	100
11	Elation Q5	Wireless Mooving	20