



## Ludger-Duvernay Theatre

### TECHNICAL RIDER

#### GENERAL INFORMATION

<b>Address</b>	1182 Saint-Laurent Boulevard, Montreal, QC H2X 2S5
<b>Telephone</b>	514-871-9883
<b>Email</b>	<a href="mailto:info@monumentnational.com">info@monumentnational.com</a>
<b>Operations Lead</b>	Sarah Lachance <a href="mailto:slachance@monumentnational.com">slachance@monumentnational.com</a> 514-871-9883, ext. 228
<b>Technical Direction</b>	Philippe Almeras <a href="mailto:palmeras@ent-nts.ca">palmeras@ent-nts.ca</a> 514-871-9883, ext. 236
<b>Maximum capacity</b>	804
<b>Production Office</b>	Located over the dressing rooms, stage right
<b>Control Booth</b>	Located behind the mezzanine
<b>Dressing rooms (Green Room)</b>	Located at stage level, stage right
<b>Security</b>	<b>Technical personnel must wear steel-toed footwear.</b> <b>Wearing a safety helmet is mandatory when working at a height.</b> <b>A safety harnesses is mandatory for anyone working at a height greater than 10' measured from the floor.</b>

**HOUSE**

Level	Section	Seats	Total
Main Floor	Orchestra	31	
	Regular	304	
	boxes	12	
	<b>Subtotal</b>		<b>347</b>
Mezzanine	Regular	150	
	Boxes - Wheelchair accessible area	8	
	<b>Subtotal</b>		<b>158</b>
Balcony	Regular	287	
	Balcony boxes	12	
	<b>Subtotal</b>		<b>299</b>
		<b>Grand Total :</b>	<b>804</b>

**STAGE**

**DIMENSIONS**

<b>Proscenium</b>	Width: .....	34'
	Height: .....	24'
<b>Apron</b>	Apron to the proscenium: .....	4'
<b>Stage</b>	Maximum width (wall to wall): .....	74'
	Depth:	
	a) proscenium to the last lineset: .....	38' 6"
	b) proscenium to the back wall: .....	44'
	Grid height: .....	65'
	clearance under catwalks (fly floors).....	28'
	width between catwalks: .....	60'
<b>Traps</b>	35 traps 6' x 3' (trap room clearance 11' 6") There is a cable gutter in place around the acting area	

**ORCHESTRA PIT**

Depth: ..... 8' 3"

The fully mechanized orchestra floor can be adjusted to various levels. The first forms an apron stage. The second provides room for 31 additional parterre seats. The third level becomes an orchestra pit that fits approximately 30 seated musicians and a conductor.

**ORCHESTRA PIT EQUIPMENT**

- 1 conductor's podium
- 1 conductor's stand
- 30 chairs for musicians
- 25 music stands for the musicians
- 4 benches, 28" legs

**LOADING DOCK**

A street-level loading dock is located at 1170 Saint-Laurent Boulevard and provides access to a freight elevator with a load capacity of up to 12,000 lb (5,455 kg). The elevator serves the basement, ground floor, trap room, and stage.

Freight elevator dimensions:

Width: ..... 92"  
 Height: ..... 95"  
 Depth: ..... 22'

**DRESSING ROOMS**

Ground floor dressing rooms:

- 2 dressing rooms for 2 people
- 1 dressing room for 4 people
- 1 Green Room
- 1 utility room
- 1 freight elevator (4' x 7') for costumes

Upper floor dressing rooms

- 2 dressing rooms for 8 people
- 1 freight elevator (4' x 7')

**LINESETS**

48 single counterweighted fly lines.  
 Maximum load capacity 750 lbs (340 kg).  
 The linesets are made of long tubular steel, 50' x 1.5" in diameter.  
 The controls are manually operated and are located at the level of the catwalk, stage left.

- 1 German pipe on an electric winch, stage left (500 lbs)
- 1 German pipe on an electric winch, stage right (500 lbs)
- 1 Pipe on electric winch, above proscenium (500 lbs)

**STAGE CURTAINS**

House curtain:

- Burgundy velvet
- Horizontal controls by counterweight at the proscenium, stage left
- Burgundy architectural border
- Horizontal controls on a winch at the grid level, stage left

5 borders:

- Height: ..... 10'
- Width: ..... 60'

12 legs:

- Height: ..... 28'
- Width: ..... 12'
- Black, flame-retardant (FR) velvet

2 backdrops:

- Height: ..... 28'
- Width: ..... 34'
- Black, FR velvet

2 pleated curtains, 50 % fullness

- Height: ..... 28'
- Width: ..... 34'
- Black, FR velvet
- 2 x 60' traveller tracks manually operated from the floor

1 black scrim

- Height: ..... 29'
- Width: ..... 50'

1 white cyclorama

- Height: ..... 30'
- Width: ..... 50'
- Full scrim cotton

**CONTROL BOOTHS**

Control Booth: Centred at the rear of the mezzanine, under the balcony.

Projection Booth: Centred at the rear of the balcony.

The Sound Control can be installed at the centre of the house but this requires the removal of 9 seats.

Maximum space available:

- Width: ..... 8' 6"
- Depth: ..... 5' 6"

**VIDEO**

- 1 Christie D12HD-H projectors (10K)
- 1 0.84 - 1.02 lens
- 1 2.0 - 4.0 lens

Bidirectional converters HDMI/3G-SDI and SDI, HDMI, VGA and CAT 6 cables available on demand

## LIGHTING EQUIPMENT

### CONSOLE ET DIMMERS

1	GrandMA3 on PC with commandwing and faderwing.
347	Dimmers 2.4 kW 24, TL3 20 amp. output terminals
24	Dimmers 6.0 kW, JOY 45 amp. output terminals

### RIGGING POSITIONS

3	catwalks to access lighting
1	18 circuit lineset on an electric winch over the orchestra pit
1	first 24-circuit electrical hanging point on the 3 <sup>rd</sup> line

### LIGHTING

10	Leko Selecon Pacific 50° 575W
30	Leko Selecon Pacific 40° 575W
20	Leko Selecon Pacific 30° 575W
6	Leko Selecon Pacific 20° 575W
6	Leko Strand SL 36° 575W
8	Leko Strand SL 26° 575W
2	Leko Strand SL 23°/50° Zoom 575W
4	Leko Strand SL 15°/32° Zoom 575W
32	Strand 6' 1 kW Fresnelite' w/ barndoors
20	Strand 8" 2 kW Fresnelite w/ barndoors
45	Pars 64 1 kW Altman – VN / N / Med / Wide
8	IRIS 4, 4 x 1 kW Strand Units (fixed position on line 47)
34	ORION 1 kW Strand Units (groundrow)
2	Followspots 400 W HTI Lycian 1267, long throw (FOH 2)
40	Lekos 1 kW Selecon Pacific 14°-35° (fixed FOH 1 and 2)
6	Lekos 2 kW Strand Cadenza 9°-16° (fixed FOH 3)
24	Lekos 1 kW Strand Cantata 11°-26°

### TOUR TIE IN :

1	200A, 120/208V, 3 phases Cam-Lock (cat walk Stage Right)
---	--

### MISCELLANEOUS

10	Side Arms
10	Booms (2' or 5' or 10')
6	Boom bases on wheels
20	floor bases
1	Superglo theatre projector screen 32' x 15' (front projection only), fixed position on lineset #9
1	Genie Lift AWP-30S

## **MISCELLANEOUS (RENTAL FEES)**

Roscolux gel filters

- 1 MDG ATMOSPHERE Fog Generator (smoke machine)

## **SOUND EQUIPMENT**

## **MIXING CONSOLES AND EQUIPMENT (MOBILE)**

### SOUND BOARD

- 1 Yamaha M7CL-48
  - MY 16-AT card (Optical 16x16 ADAT card)
  - MY 16-AUD card (16x16 Dante card)
  - MY 16-TD card (16x16 TDIF card)

### MOBILE GEAR (ON DEMAND)

- 1 Tascam CD-RW901SL (CD recorder)
- 2 Tascam CD-500B (CD player)
- 1 DENON DN-4500 (dual CD player)

### MICROPHONES AND DIs

- 4 Radial PRO-DI
- 2 Radial PRO-AV2
- 1 Radial TWIN-ISO
  
- 9 Shure SM-58
- 1 Shure SM-57
- 2 Sennheiser MD-421
- 2 Sennheiser e906
- 4 Sennheiser MZH 908b
- 2 AKG 480C
  
- 2 Wireless microphones SM-58 UR2
- 2 Wireless Head set microphones Beta 53 UR1
  
- 14 Tall boom microphone stands
- 6 Tall Atlas microphone stands
- 1 Small boom microphone stand
- 6 Small table microphone stands

### SOUND SYSTEM

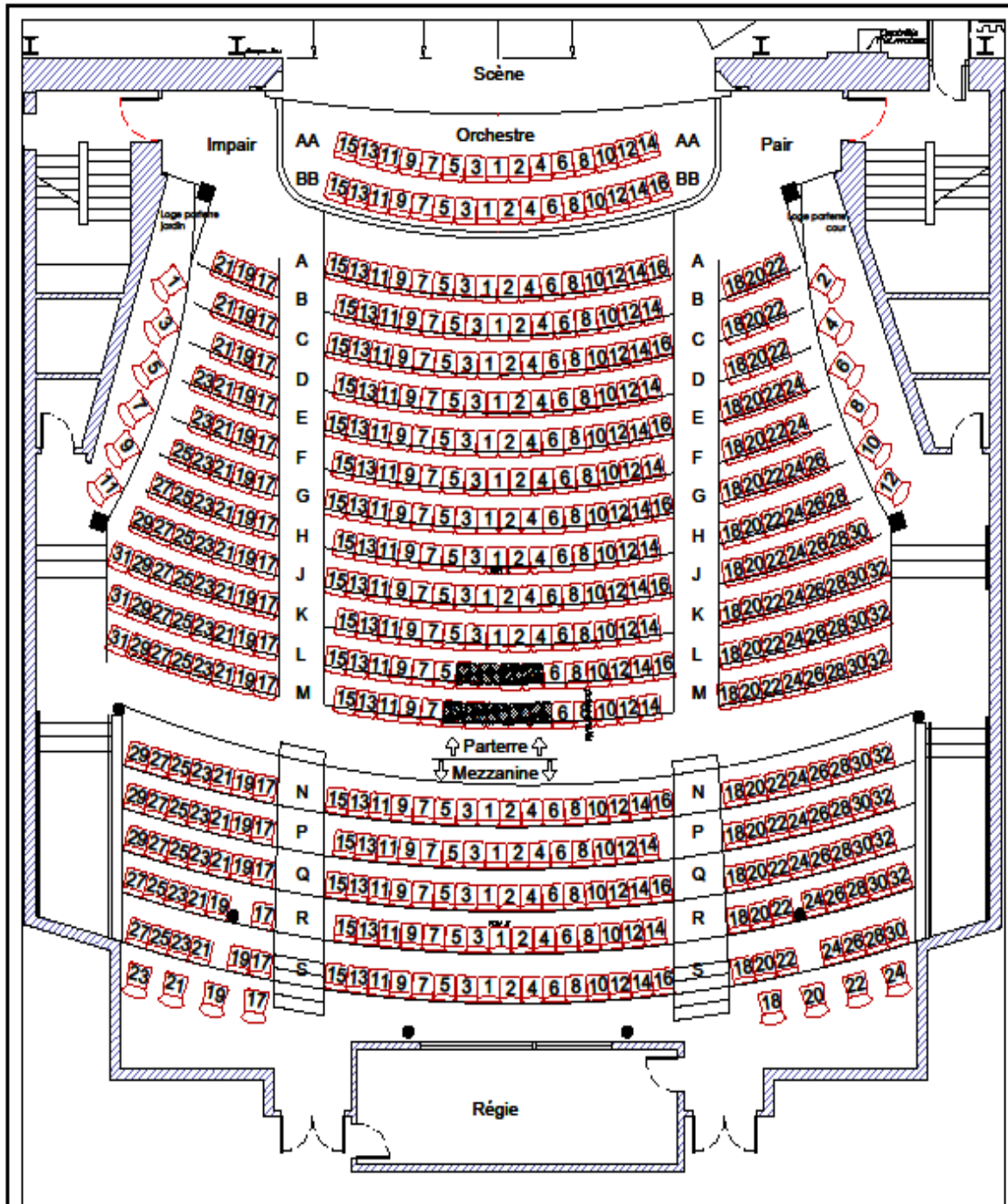
- 2 Meyer UPA-1C (Center)
- 2 Meyer UPQ-1P (Balcony stereo configuration)
- 2 Meyer UPQ-1P (Stage level stereo configuration)
- 2 Meyer 700-HP (On each side of the stage)
- 2 Meyer UPM-1P (Under balcony)
- 4 Meyer UPJuniors (Balcony surround)
- 4 Meyer UPJuniors (Stage level surround)
- 1 Meyer Galileo 616
  
- 2 KRK RP5-G4 (Booth monitoring)
- 1 Heritage Audio Baby RAM (Booth monitor controller)
  
- 8 Meyer UPA-1C (Mobile)
- 1 House sound system in dressing rooms and lobby
- 1 2 channels Clearcom system with 12 belt packs and 2 Desk stations

**Monument-National: Ludger-Duvernay Theatre – SHOWS**

Lineset	From Zero	In use	Cap.lbs	Load	Zero	TRIM
Zero	- 10'6"		<b>500</b>			
	02'0"				House curtain	
1	02'7"		750		Fals proscenium	
2	03'2"		750			
3	03'10"	24 circuits électriques	<b>400</b>		LX	
4	04'4"		750			
5	04'10"		750			
6	05'4"		750			
7	05'10"		750		Border	
8	06'6"		750		Leg	
9	07'2"		750		Screen 32' x 15'	
10	07'10"		750			
11	08'6"		750			
12	09'2"		750			
13	09'10"		750			
14	10'6"		750		Border	
16	11'10"		750		Leg	
17	12'6"		750			
18	13'2"		750			
19	13'10"		750			
20	14'6"		750			
21	15'2"		750			
22	15'10"		750			
23	16'6"		750			
24	17'2"		750		Border	
25	17'10"		750		Leg	
26	18'6"		750			
27	19'2"		750			
28	19'10"		750		Screen 16' x 9'	
29	20'6"		750		Half stage flat	
31	22'0"		750			
32	22'6"		750			
33	23'2"		750			

34	23'10"		750		Border	
36	25'2"		750		Leg	
38	26'6"		750			
39	27'2"		750			
42	29'2"		750			
43	29'10"		750		Border	
44	30'6"		750		Leg	
45	31'6"		750		Scrim	
47	32'6"		750		10 Iris 4 (fixed)	
49	33'10"		750			
50	34'6"		750			
51	35'2"		750			
52	35'10"		750			
53	36'6"		750		Back drop	
54	37'2"		750		Leg	
55	37'10"		750		Cyclo	
56	38'6"		750		Wind break	
Jardin/Left	28'2"		<b>500</b>		German	
Cour/right	28'		<b>500</b>		German	



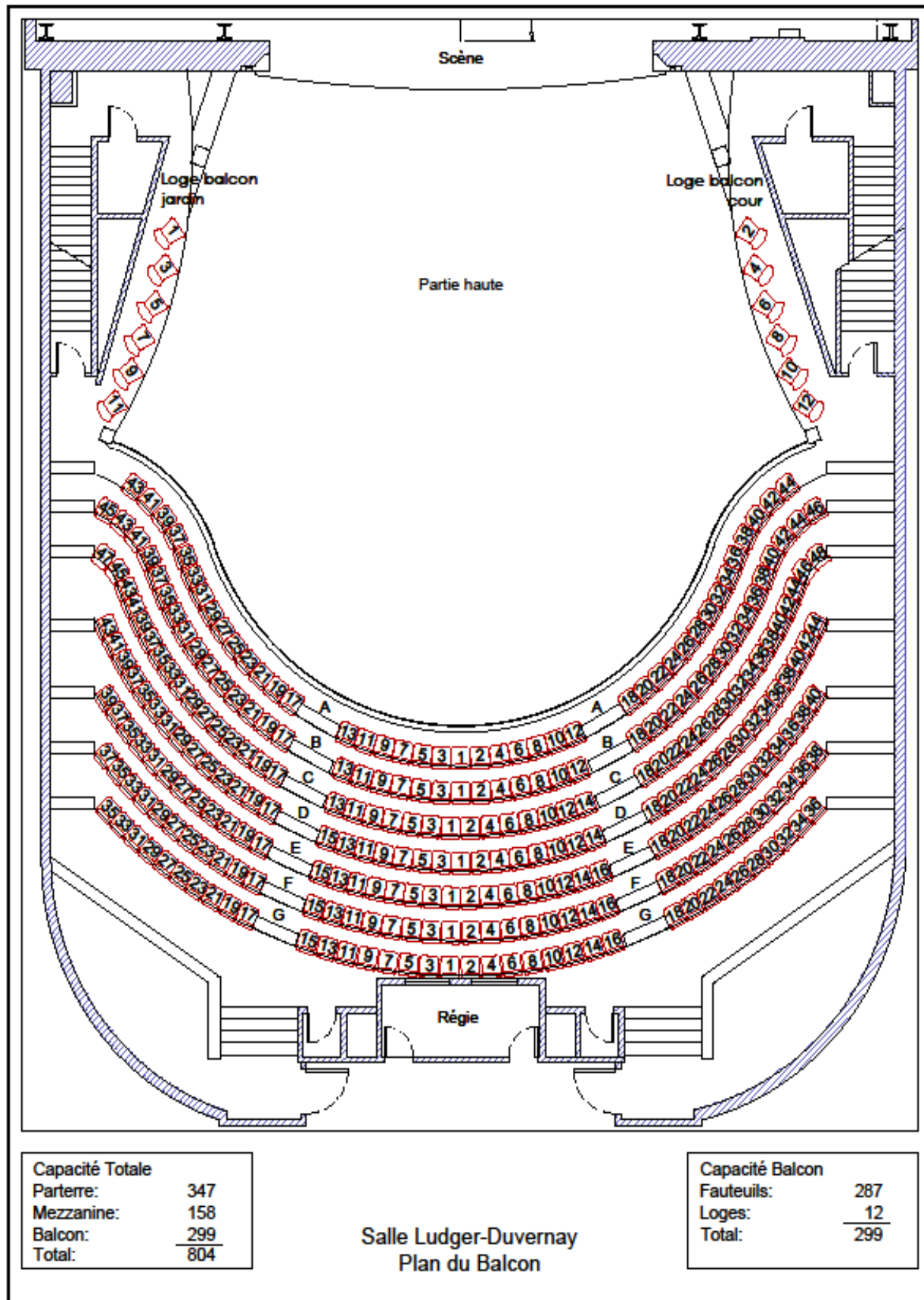


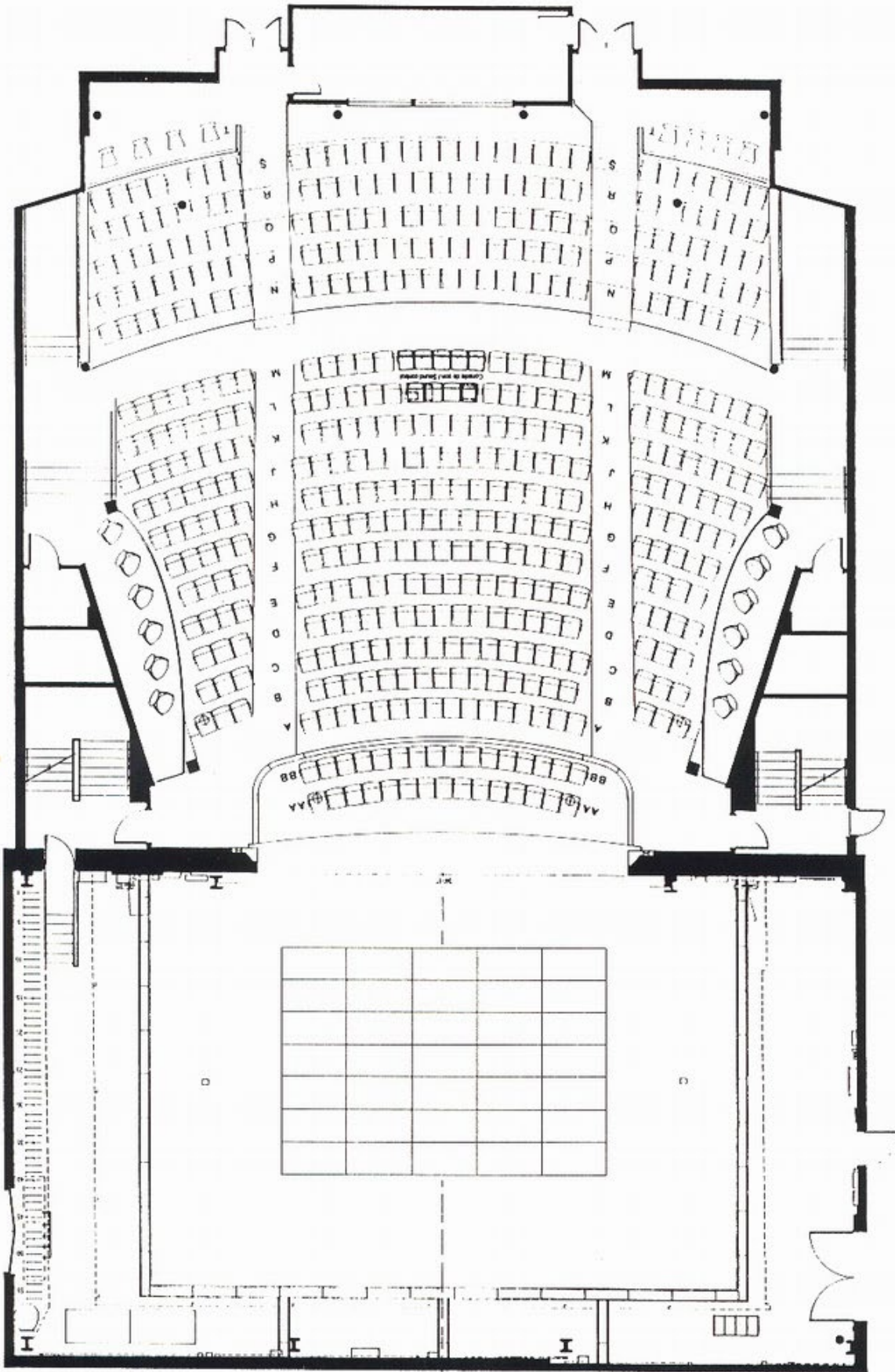
Capacité Totale	
Parterre:	347
Mezzanine:	158
Balcon:	299
Total:	804

Capacité Parterre	
Orchestre:	31
Fauteuils:	304
Loges:	12
Total:	347

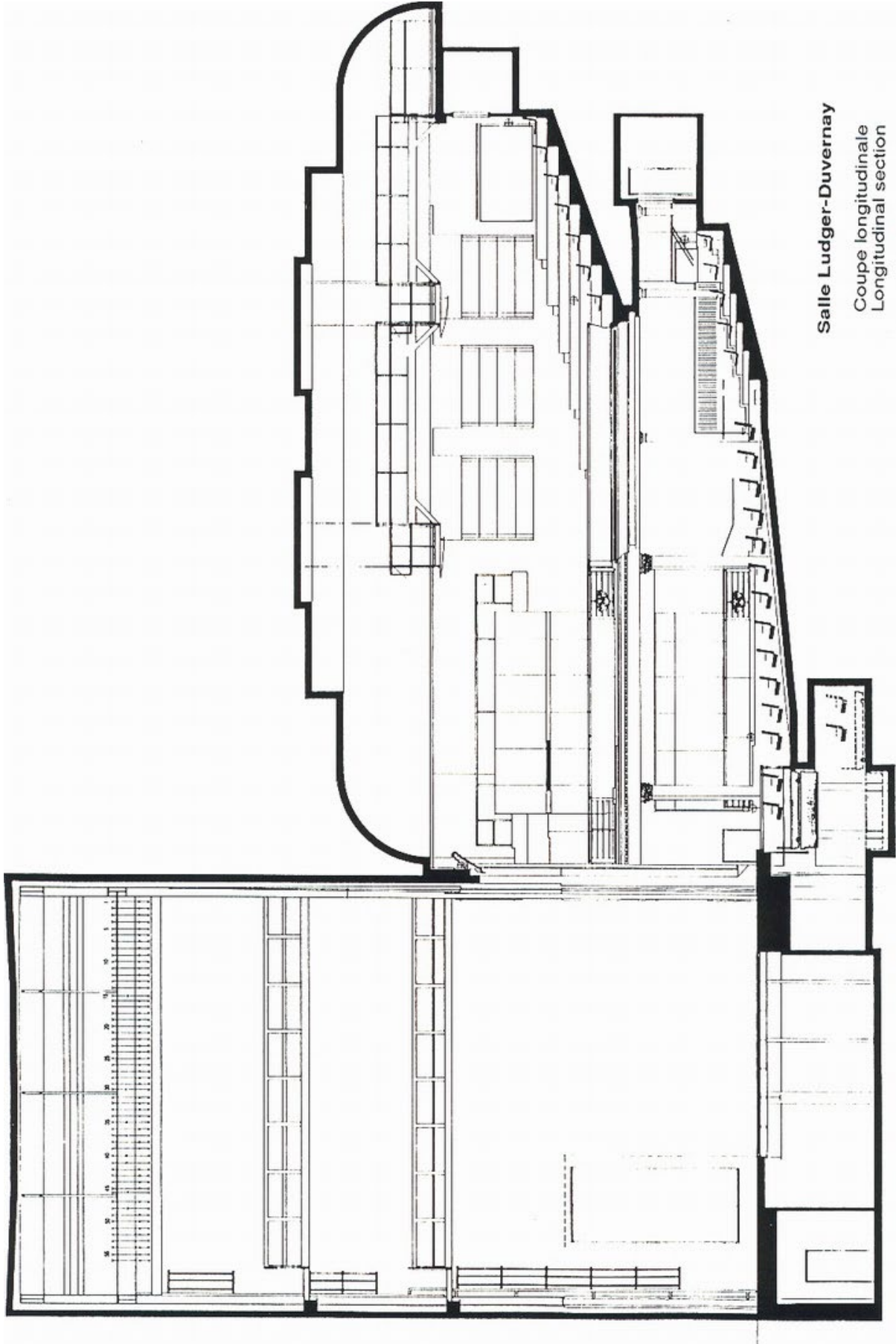
Capacité Mezzanine	
Fauteuils:	150
Handicapés:	8
Total:	158

Salle Ludger-Duvernay  
Plan du parterre et de la mezzanine





Salle Ludger-Duvernay  
Plan du parterre et de la mezzanine  
Plan of parterre and mezzanine



Salle Ludger-Duvernay  
Coupe longitudinale  
Longitudinal section

**The Monument-National forms one of two campuses of the National Theatre School of Canada.**

- Located near the corner of Saint-Laurent and René-Lévesque Boulevards, it is within walking distance of both the Saint-Laurent and Place-d'Armes metro stations.
- The main entrance and Box Office are located at 1182 Saint-Laurent Boulevard; The reception staff and backstage entrance is located at 1170 Saint-Laurent Boulevard.
- It was built in 1893 and entirely renovated in 1993 for its centennial anniversary.
- The Box Office is managed by the Monument-National and powered by Tuxedo ([monumentnational.tuxedobillet.com](http://monumentnational.tuxedobillet.com)).