



MONUMENT
NATIONAL

Ludger-Duvernay Theatre

TECHNICAL RIDER 2020-21

GENERAL INFORMATION

Address	1182 Saint-Laurent Boulevard, Montreal, QC H2X 2S5
Telephone	(514) 871-9883
Email	info@monumentnational.com
Rentals & Partnerships	Guillaume Fontaine location@monumentnational.com (514) 871-9883, ext. 227
Technical Direction	directiontechniquemn@ent-nts.ca (514) 871-9883, ext. 236
Maximum capacity	804
Production Office	Located over the dressing rooms, stage right
Control Booth	Located behind the mezzanine
Dressing rooms (Green Room)	Located at stage level, stage right
Security	Technical personnel must wear steel-toed footwear. Wearing a safety helmet is mandatory when working at a height. A safety harnesses is mandatory for anyone working at a height greater than 10' measured from the floor.

HOUSE

Level	Section	Seats	Total
Main Floor	Orchestra	31	
	Regular	304	
	boxes	12	
	Subtotal		347
Mezzanine	Regular	150	
	Boxes - Wheelchair accessible area	8	
	Subtotal		158
Balcony	Regular	287	
	Balcony boxes	12	
	Subtotal		299
		Grand Total :	804

STAGE

DIMENSIONS

Proscenium	Width:	34'
	Height:	24'
Apron	Apron to the proscenium:	4'
Stage	Maximum width (wall to wall):	74'
	Depth:	
	a) proscenium to the last lineset:	38' 6"
	b) proscenium to the back wall:	44'
	Grid height:	65'
	clearance under catwalks (fly floors).....	28'
	width between catwalks:	60'
Traps	35 traps 6' x 3' (trap room clearance 11' 6") There is a cable gutter in place around the acting area	

ORCHESTRA PIT

Depth: 8' 3"

The fully mechanized orchestra floor can be adjusted to various levels. The first forms an apron stage. The second provides room for 31 additional parterre seats. The third level becomes an orchestra pit that fits approximately 30 seated musicians and a conductor.

ORCHESTRA PIT EQUIPMENT

- 1 conductor's podium
- 1 conductor's stand
- 30 chairs for musicians
- 25 music stands for the musicians
- 4 benches, 28" legs

LOADING DOCK

A street-level loading dock is located at 1170 Saint-Laurent Boulevard and provides access to a freight elevator with a load capacity of up to 12,000 lb (5,455 kg). The elevator serves the basement, ground floor, trap room, and stage.

Freight elevator dimensions:

Width: 92"
 Height: 95"
 Depth: 22'

DRESSING ROOMS

Ground floor dressing rooms:

- 2 dressing rooms for 2 people
- 1 dressing room for 4 people
- 1 Green Room
- 1 utility room
- 1 freight elevator (4' x 7') for costumes

Upper floor dressing rooms

- 2 dressing rooms for 8 people
- 1 freight elevator (4' x 7')

LINESETS

48 single counterweighted fly lines.
 Maximum load capacity 750 lbs (340 kg).
 The linesets are made of long tubular steel, 50" x 1.5" in diameter.
 The controls are manually operated and are located at the level of the catwalk, stage left.

- 1 German pipe on an electric winch, stage left
- 1 German pipe on an electric winch, stage right

STAGE CURTAINS

House curtain:

- Burgundy velvet
- Horizontal controls by counterweight at the proscenium, stage left
- Burgundy architectural border
- Horizontal controls on a winch at the 2nd catwalk, stage left

5 borders:

- Height: 10'
- Width: 60'

12 legs:

- Height: 28'
- Width: 12'
- Black, flame-retardant (FR) velvet

2 backdrops:

- Height: 28'
- Width: 34'
- Black, FR velvet

2 pleated curtains, 50 % fullness

- Height: 28'
- Width: 34'
- Black, FR velvet
- 2 x 60' traveller tracks manually operated from the floor

1 black scrim

- Height: 29'
- Width: 50'

1 white cyclorama

- Height: 30'
- Width: 50'
- Full scrim cotton

CONTROL BOOTHS

Control Booth: Centred at the rear of the mezzanine, under the balcony.

Projection Booth: Centred at the rear of the balcony.

The Sound Control can be installed at the centre of the house but this requires the removal of 9 seats.

Maximum space available:

- Width: 8' 6"
- Depth: 5' 6"

VIDEO

2	Christie D12HD-H projectors (10K)	1	Panasonic PT-DW6300 projector (6K)
2	0.84 - 1.02 lenses	1	ET-DLE250 lens
1	2.0 - 4.0 lens	1	ET-DLE150 lens

LIGHTING EQUIPMENT

CONSOLE ET DIMMERS

1	Strand Palette VL console
347	Dimmers 2.4 kW 24, TL3 20 amp. output terminals
24	Dimmers 6.0 kW, JOY 45 amp. output terminals

RIGGING POSITIONS

3	catwalks to access lighting
1	18 circuit lineset on an electric winch over the orchestra pit
1	first 24-circuit electrical hanging point on the 3 rd line

Total 48 linesets

LIGHTING

- 10 Leko Selecon Pacific 50° 575W
- 30 Leko Selecon Pacific 40° 575W
- 20 Leko Selecon Pacific 30° 575W
- 6 Leko Selecon Pacific 20° 575W
- 6 Leko Strand SL 36° 575W
- 8 Leko Strand SL 26° 575W
- 2 Leko Strand SL 23°/50° Zoom 575W
- 4 Leko Strand SL 15°/32° Zoom 575W
- 32 Strand 6' 1 kW Fresnelite' w/ barndoors
- 20 Strand 8" 2 kW Fresnelite w/ barndoors
- 45 Pars 64 1 kW Altman – VN / N / Med / Wide
- 11 Pars 64 1 kW Altman Med (fixed position on line 22)
- 8 IRIS 4, 4 x 1 kW Strand Units (fixed position on line 47)
- 34 ORION 1 kW Strand Units (groundrow)
- 2 Followspots 400 W HTI Lycian 1266, short throw
- 2 Followspots 400 W HTI Lycian 1267, long throw
- 40 Lekos 1 kW Selecon Pacific 14°-35° (fixed FOH 1 and 2)
- 6 Lekos 2 kW Strand Cadenza 9°-16° (fixed FOH 3)
- 24 Lekos 1 kW Strand Cantata 11°-26°

MISCELLANEOUS

- 10 Side Arms 24"
- 10 Booms (2' or 5' or 10')
- 6 Boom bases on wheels
- 20 floor bases
- 1 Superglo theatre projector screen 32' x 15' (front projection only), fixed position between the stage curtain and fire curtain.

MISCELLANEOUS (RENTAL FEES)

- Roscolux gel filters
- 1 MDG ATMOSPHERE Fog Generator (smoke machine)

SOUND EQUIPMENT

MIXING CONSOLES AND EQUIPMENT (MOBILE)

- 1 Yamaha M7CL, 48 line/mic inputs (48 volts), 16 OMNI outputs
- 2 Dual Channel 31-Band Graphic DBX 2231 Equalizer/Limiter
- 1 CD-RW Tascam CD-RW901sl Professional CD Recorder
- 2 DENON DN-C630 CD Player

- 4 Mono Passive DI units
- 2 Stereo Passive DI units

- 9 Shure SM-58
- 1 Shure SM-57
- 2 Sennheiser MD-421
- 2 Sennheiser e906
- 4 Sennheiser MZH 908b
- 4 Sennheiser MZA 900P
- 3 Audio-Technica U851R
- 2 AKG 480C

- 2 SF SM-58 UR2 microphones
- 2 SF Beta 53 UR1 Headworn Vocal Microphones

- 14 Large boom mic bases
- 6 Large Atlas mic bases
- 1 Small boom mic base
- 6 Small table mic bases

SPEAKERS AND COMMUNICATION SYSTEM

- 6 Full-range MEYER UPA-1C et UPQ-1P loudspeakers
- 2 MEYER 700-HP Subwoofers (self-powered), w/ (1) Meyer Galileo 616 processor.
- 4 Meyers UPA-1C full-range speakers (movable/hangable)
- 3 Meyers UPM-1P (ultra-compact, self-powered speakers) w/ a Meyer Galileo 616 processor for the front of house
- 2 Amp racks for MEYER UPA-1C speaker system w/ (1) 8 ASHLY Fet 2000M amp, (2) Crown POWER-TECH 1 amps (EAW FN 153 system)

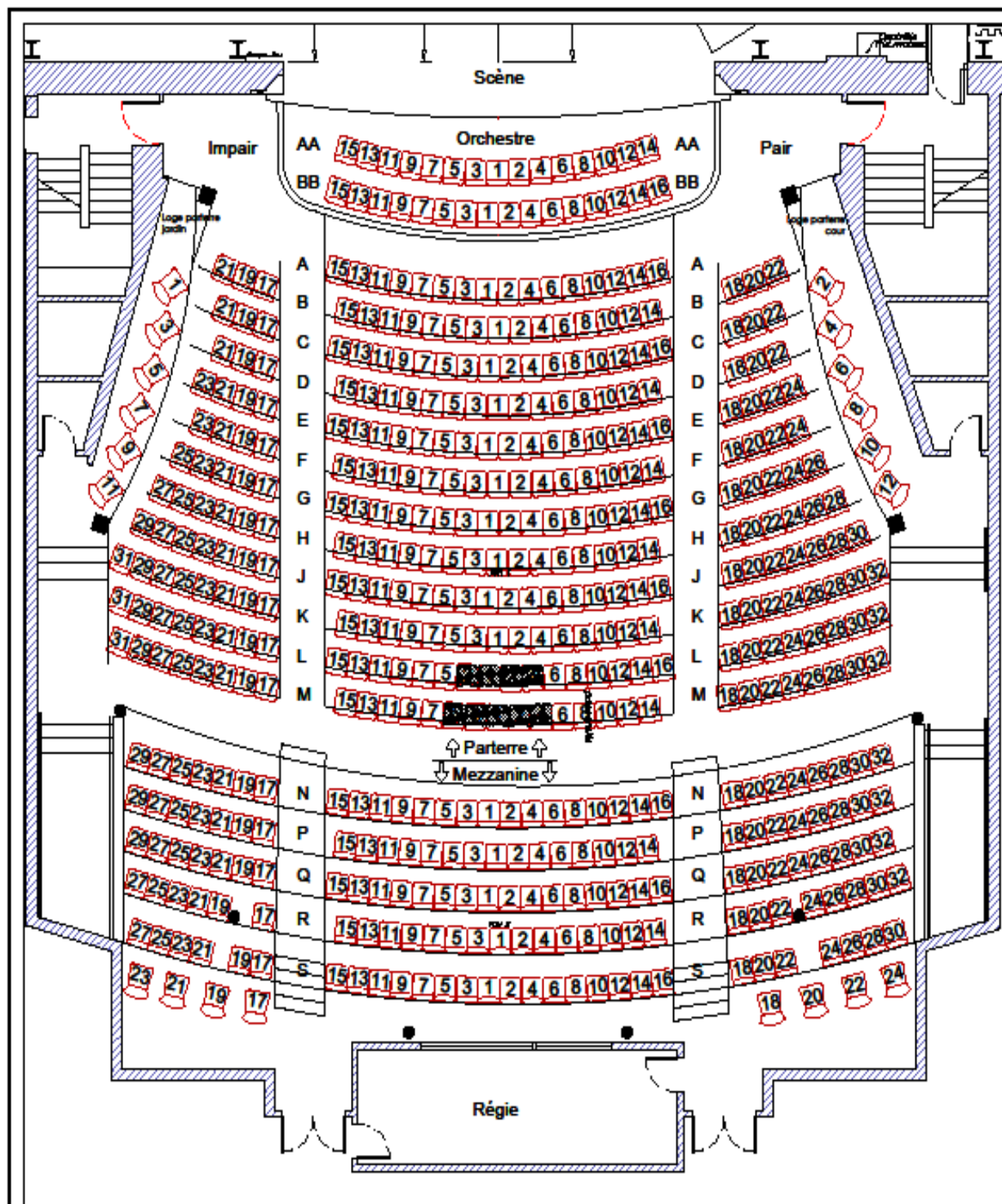
- 8 Meyers UP JUNIOR, self-power for surround, controlled by Galileo 616: 4 at ear balcony; 4 at rear main floor)

- 2 JBL Control 1 Pro booth monitor w/ Yamaha AX-592 amp
- 1 Multi-zone paging system for dressing rooms/lobby consisting of two TOA A-912 MK2 amps, three 70-volt extension speakers, and (1) TOA paging mic
- 1 Clear-Com 2-channel headset system w/ (8) beltpack user stations and (2) remote speaker stations

Monument-National: Ludger-Duvernay Theatre – SHOWS

Lineset	Distance to Zero	Identification	Point Zero	H-TRIM	L-TRIM
	02' 0"		House curtain		
1	02' 7"		False proscenium		
2	03' 2"				
3	03' 10"	24 circuits in the gutter	LX		
4	04' 4"				
5	04' 10"				
6	05' 4"				
7	05' 10"		Border		
8	06' 6"		Legs		
9	07' 2"	Projection screen, 30' W x 15' H	Screen 32' x 15'		
10	07' 10"				
11	08' 6"				
12	09' 2"				
13	09' 10"				
14	10' 6"		Border		
16	11' 10"		Legs		
17	12' 6"				
18	13' 2"				
19	13' 10"				
20	14' 6"				
21	15' 2"				
22	15' 10"		11 x Par 64 (attached)		
23	16' 6"				
24	17' 2"		Border		
25	17' 10"		Legs		
26	18' 6"				
27	19' 2"		Border		
28	19' 10"		Screen 16' x 9'		
29	20' 6"		Black backdrop		
31	22' 0"				
32	22' 6"				
33	23' 2"				
34	23' 10"		Border		

36	25' 2"		Legs		
38	26' 6"				
39	27' 2"				
42	29' 2"				
43	29' 10"		Border		
44	30' 6"		Scrim		
45	31' 6"		Legs		
47	32' 6"		10 IRIS 4 (attached)		
49	33' 10"				
50	34' 6"				
51	35' 2"				
52	35' 10"				
53	36' 6"		Black Traveller		
54	37' 2"		Legs		
55	37' 10"		Cyclorama		
56	38' 6"		Black draftblocker		

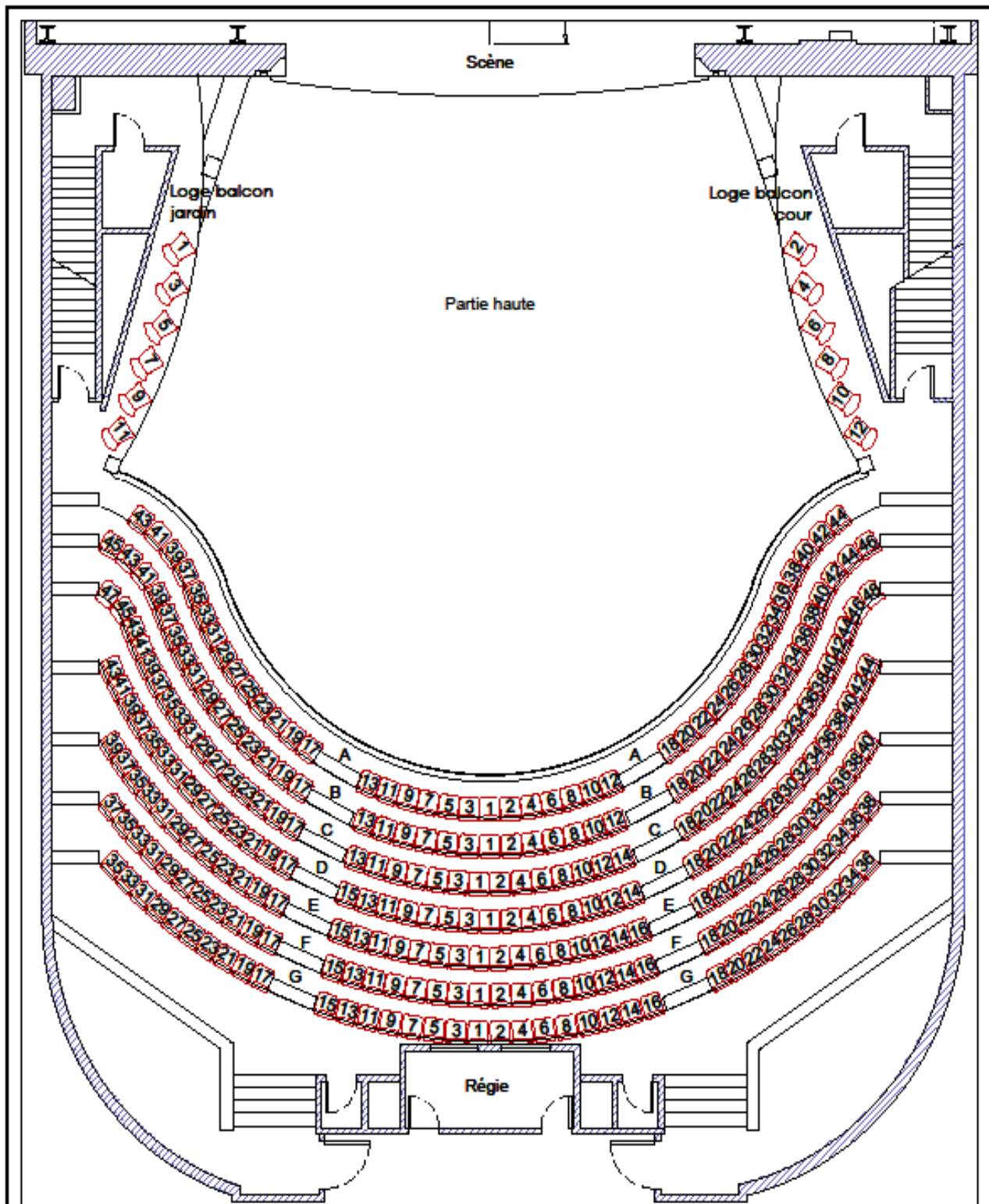


Capacité Totale	
Parterre:	347
Mezzanine:	158
Balcon:	299
Total:	804

Capacité Parterre	
Orchestre:	31
Fauteuils:	304
Loges:	12
Total:	347

Capacité Mezzanine	
Fauteuils:	150
Handicapés:	8
Total:	158

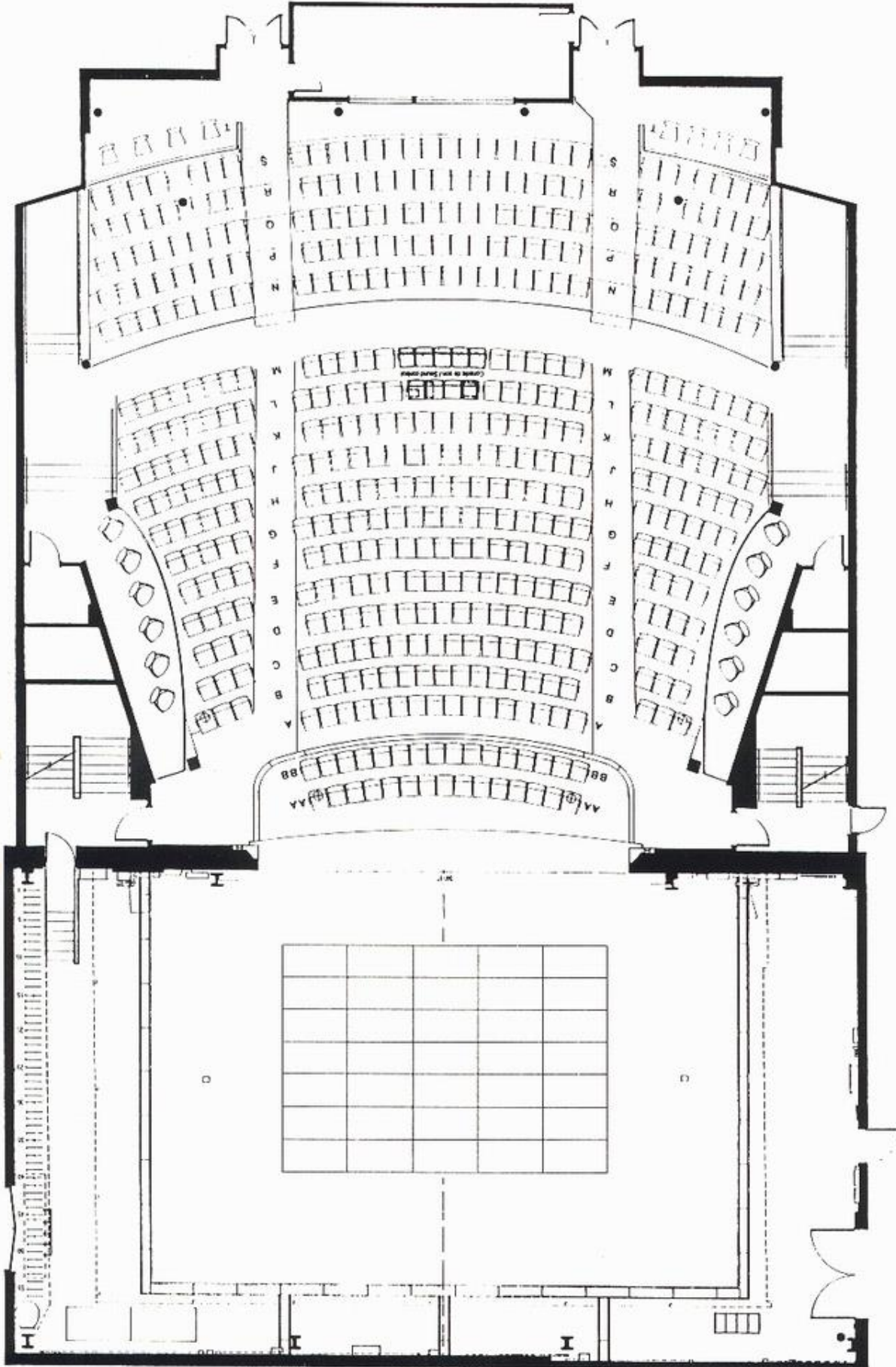
Salle Ludger-Duvernay
Plan du parterre et de la mezzanine



Capacité Totale	
Parterre:	347
Mezzanine:	158
Balcon:	299
Total:	804

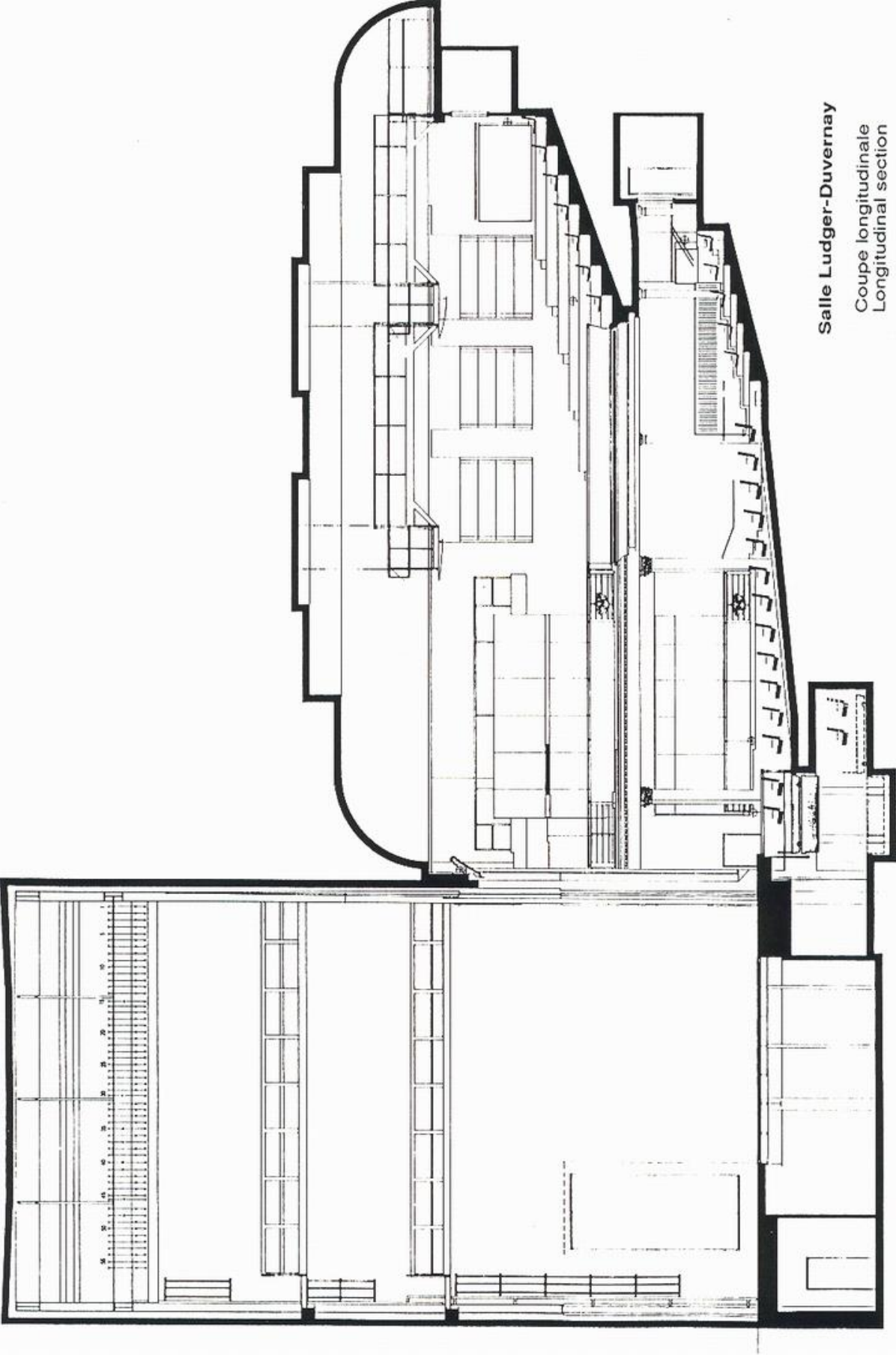
Salle Ludger-Duvernay
Plan du Balcon

Capacité Balcon	
Fauteuils:	287
Loges:	12
Total:	299



Salle Ludger-Duvernay

Plan du parterre et de la mezzanine
Plan of parterre and mezzanine



Salle Ludger-Duvernay

Coupe longitudinale
Longitudinal section

The Monument-National forms one of two campuses of the National Theatre School of Canada.

- Located near the corner of Saint-Laurent and René-Lévesque Boulevards, it is within walking distance of both the Saint-Laurent and Place-d'Armes metro stations.
- The main entrance and Box Office are located at 1182 Saint-Laurent Boulevard; The reception staff and backstage entrance is located at 1170 Saint-Laurent Boulevard.
- It was built in 1893 and entirely renovated in 1993 for its centennial anniversary.
- The Box Office is managed by the Monument-National and powered by Tuxedo (monumentnational.tuxedobillet.com).