

A black and white photograph of a modern building with a large glass facade and a wide set of concrete stairs leading up to it. The sky is visible through the glass panels.

**DOUGLAS**

**DOUGLAS COLLEGE**

# **CAMPUS GUIDE**

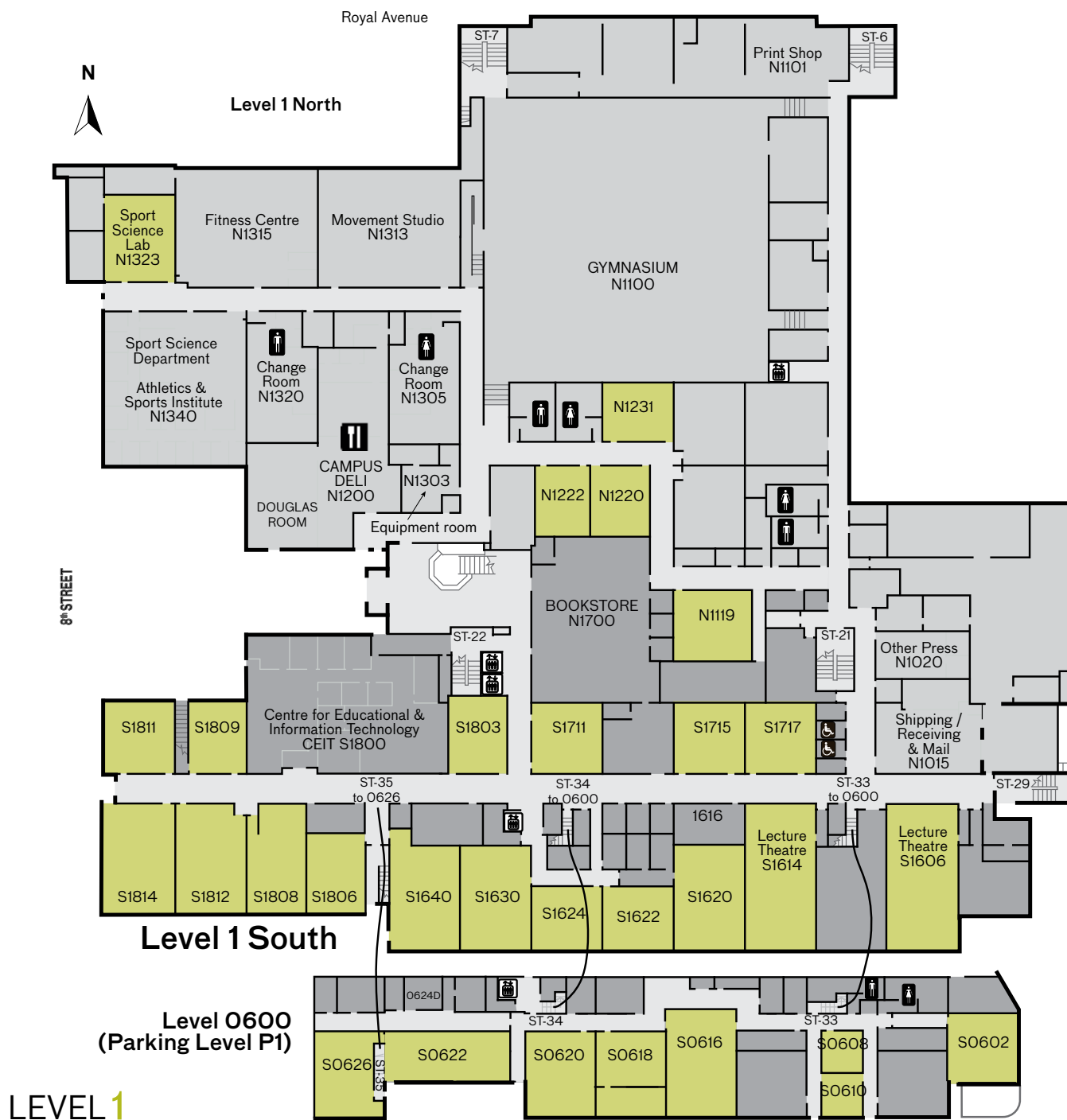
**NEW WESTMINSTER CAMPUS 2015-2016**

**[douglascollege.ca](http://douglascollege.ca)**





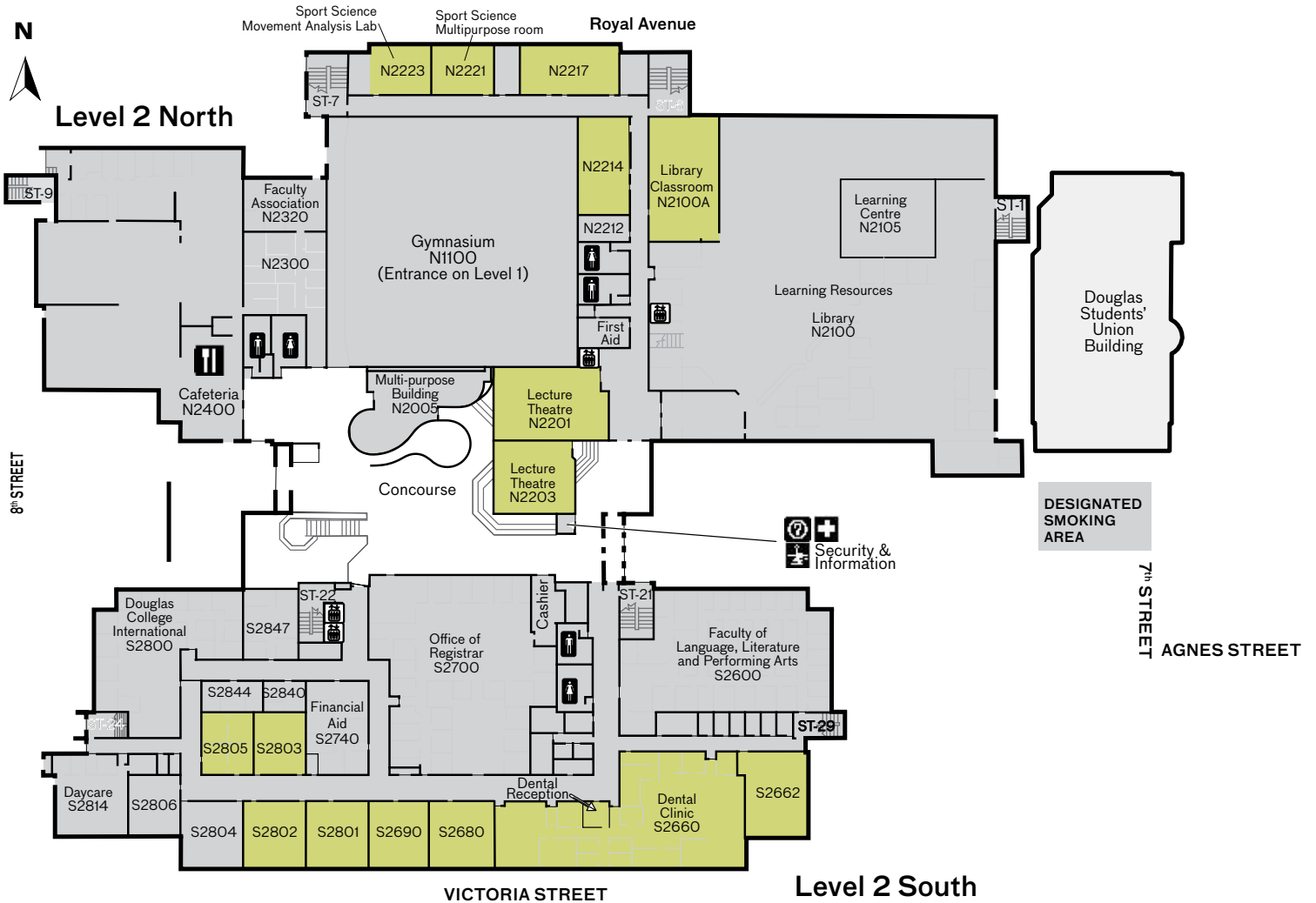
# First & O600 Floor Plans New Westminster Campus



S1020	Other Press
S1015	Mail, Shipping and Receiving
N1100	Gymnasium
N1101	Printshop
N1200	Campus Deli/Douglas Room
N1340	Sport Science Department
N1340	Athletics and Sports Institute

N1305	Women's change rooms
N1320	Men's change rooms
N1315	Fitness Centre
s1700	Bookstore
s1800	Centre for Educational and Information Technology CEIT

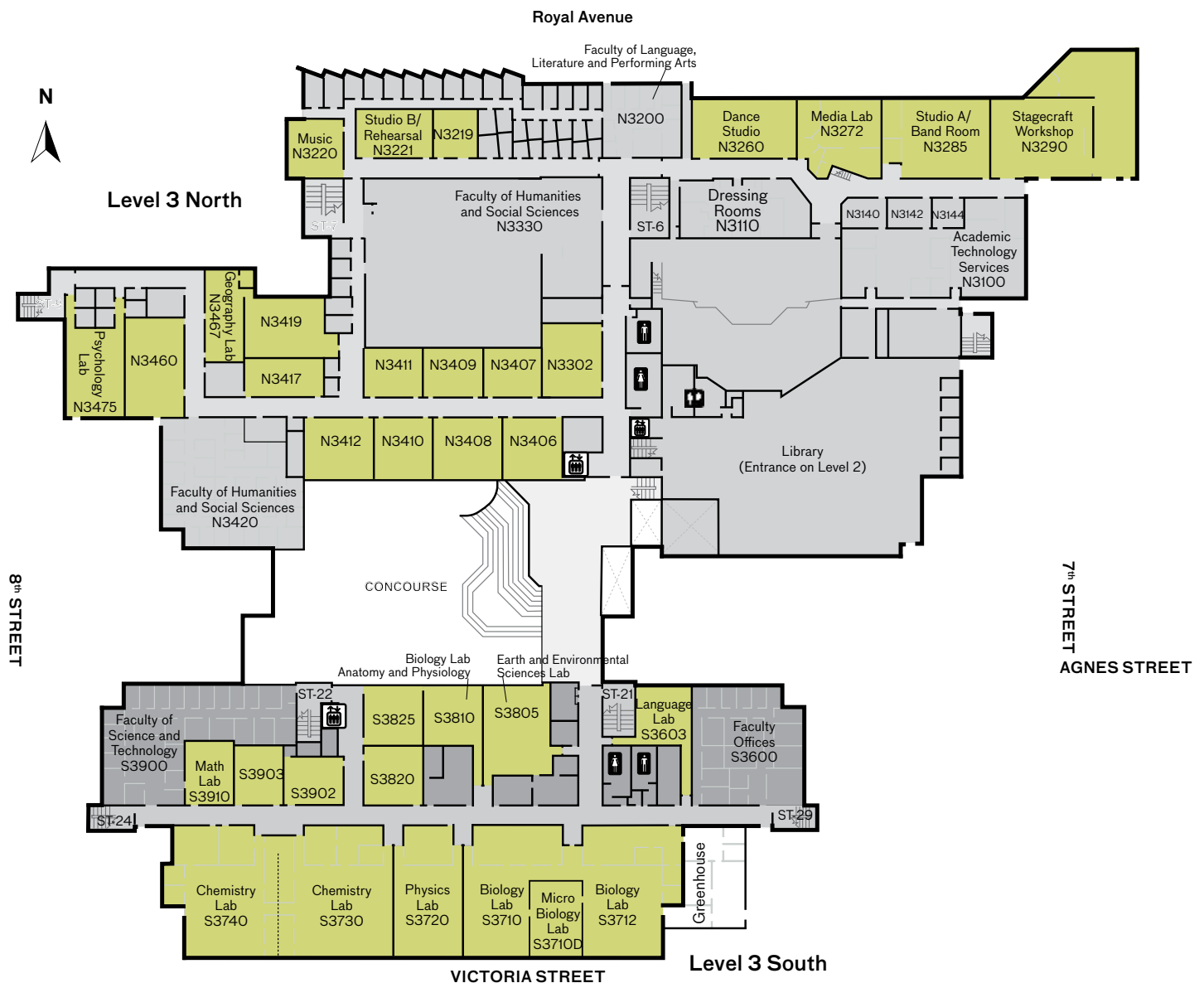
# Second Level Floor Plan New Westminster Campus



## LEVEL 2

N1100	Gymnasium	s2600	Faculty of Language, Literature and Performing Arts
N2100	Learning Resources and Library	s2660	Dental Clinic
N2105	Learning Centre	s2700	Office of Registrar
N2203A	Security Kiosk	s2740	Financial Aid
N2320	Faculty Association (DCFA)	s2786	Cashier
N2400	Cafeteria	s2800	Douglas College International
		s2814	Daycare Centre

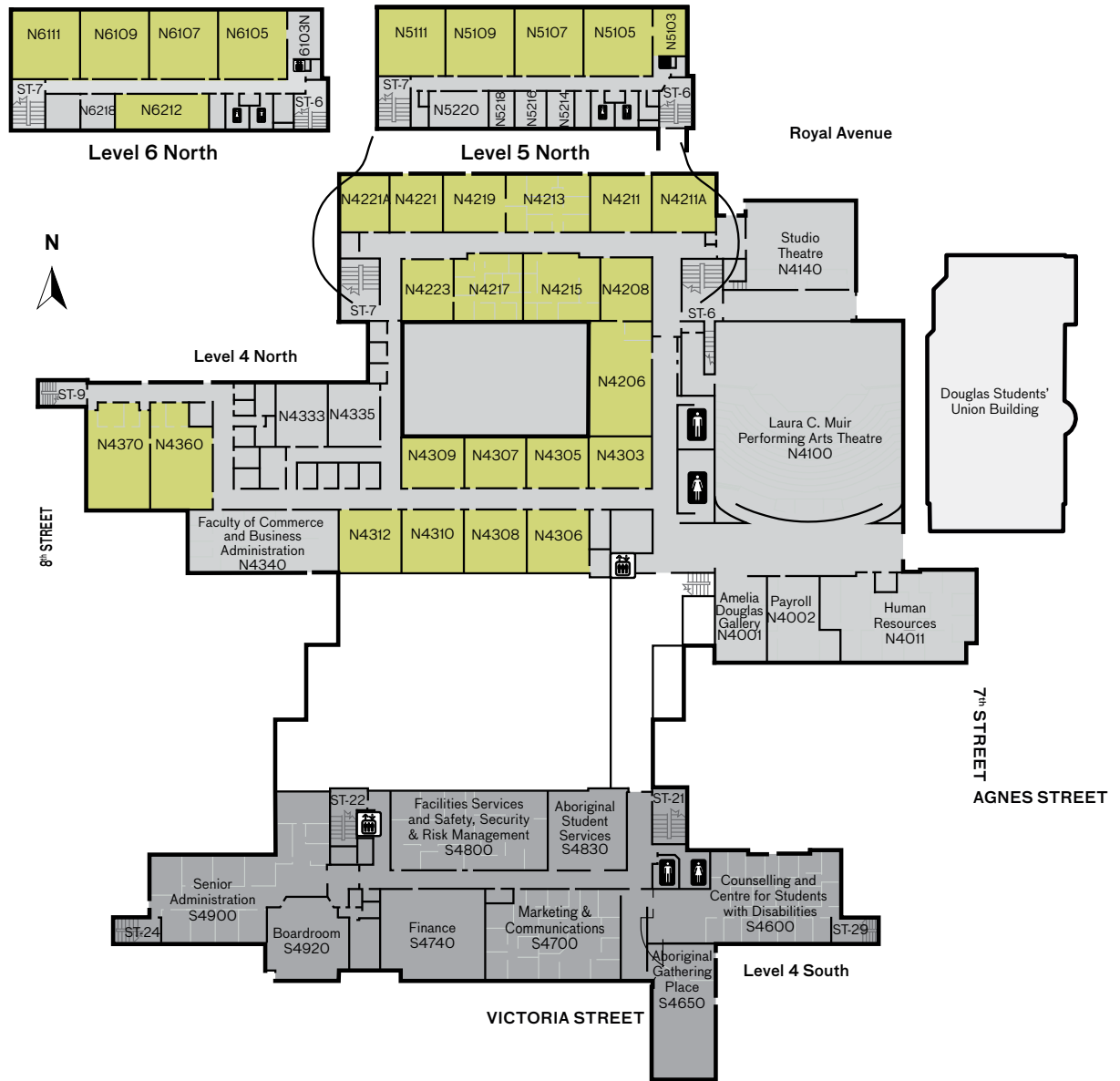
# Third Floor Plan New Westminster Campus



## LEVEL 3

N3100	Academic Technology Services	S3710, S3712	Biology Lab
N3200	Performing and Fine Arts	S3720	Physics Lab
N3220	Music Lab	S3730, S3740	Chemistry Lab
N3221	Studio B/Rehearsal	S3805	Earth and Environmental Sciences Lab
N3219	Studio B Control	S3900	Faculty of Science and Technology
N3260	Dance Studio		
N3272	Media Lab		
N3285	Studio A/Band Room		
N3290	Stagecraft Workshop		
N3330/3420	Faculty of Humanities and Social Sciences		

## Fourth, Fifth & Six Floor Plans New Westminster Campus

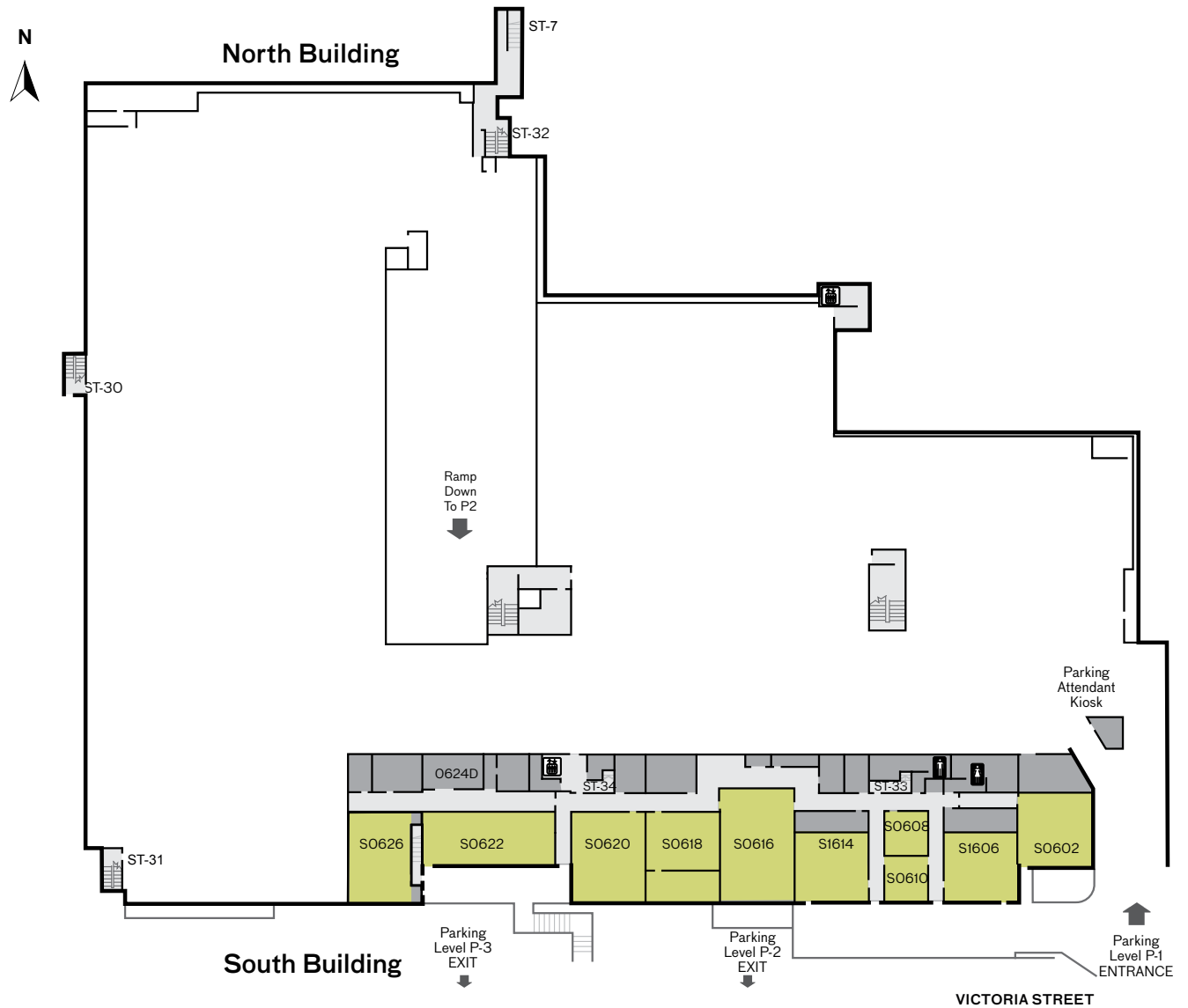


## LEVEL 4

## LEVEL 5 & 6

N4001	Amelia Douglas Gallery	s4700	Marketing and Communications
N4002	Payroll	s4740	Finance
N4011	Human Resources	s4800	Facilities Services / Safety,
N4100	Laura C. Muir Performing Arts Theatre		Security & Risk Management and Purchasing
N4140	Studio Theatre	s4830	Aboriginal Student Services
N4340	Faculty of Commerce and Business Administration	s4650	Aboriginal Gathering Place
		s4900	Senior Administration
s4600	Student Services	s4920	Boardroom
	• Counselling	s6103	Meeting Room
	• Career Resource Centre		
	• Centre for Students with Disabilities		

# O600 & Parking Level P1 Floor Plan New Westminster Campus



LEVEL **O600** & PARKING LEVEL **1**



## **CAMPUS STREET ADDRESS**

700 Royal Avenue (at 8th Street), New Westminster, BC

## **CAMPUS MAILING ADDRESS**

PO Box 2503, New Westminster, BC V3L 5B2

## **CENTRAL SWITCHBOARD**

604 527 5400

## **CAMPUS HOURS**

Monday to Friday 8 to 11pm

Saturday 8 to 7pm

Sunday Limited Access from 8 am to 6 pm

## **ACCESS FOR VISITORS OR STUDENTS WITH DISABILITIES**

Reserved parking for people with disabilities is available in the above ground and underground parking lots.

## **INFORMATION**

Inquiries should be made at Security in the Concourse (second level)

## **ROOM NUMBERS**

The campus is divided into two blocks, north and south. Each room number precedes with the floor number. Classrooms are labelled in green.

## **FOOD SERVICE**

Meals and snacks are available in the cafeteria located on the north west side of the Concourse (second floor) or at the Campus Deli on the NW side of the concourse (first floor).

## **RESTRICTED SMOKING POLICY**

All areas within the College building are designated non-smoking, including the Concourse and rooftop patios. There are two designated smoking areas: second floor east entrance plaza next to the Student Union Building and fourth floor entrance next to Human Resources.

## **SECURITY**

Call Security for all emergencies – Fire/Police/Ambulance/First Aid. Security and First Aid is located in the Concourse (second floor) Security Kiosk. From an internal college telephone call local 2400 for emergencies or call 604-527-5405 or 604-218-4925 (cell).