



Le Café

TECHNICAL RIDER

GENERAL INFORMATION

Address	1182 boulevard Saint-Laurent Montréal, Qc H2X 2S5
Phone	514-871-9883
Rental	location@ent-nts.ca
Technical Direction	technique.mn@ent-nts.ca
Maximum capacity	100 (cabaret setup) – 180 (cocktail setup)
Production office	None
Control Booth	None
Dressing rooms (Green Room)	Located in the middle of the main entrance staircase
Safety	<p>Technical personnel must wear steel-toed footwear.</p> <p>Wearing a safety helmet is mandatory when working at height.</p> <p>A safety harness is mandatory for anyone working at a height greater than 10' measured from the floor.</p>

VENUE

Located on the ground floor of the Monument-National, **Le Café** has floor-to-ceiling windows that look out onto Saint-Laurent Boulevard, symbolizing its openness to Montreal's city life. It is equipped with versatile technical equipment, making it ideal for a wide range of activities – launches, conferences, intimate gatherings, shows – all in a warm, inviting atmosphere. This venue can accommodate 100 people seated or 180 in a cocktail setting.

FURNISHINGS

FURNITURE

1	Lectern
15	Round cabaret tables (20" in diameter and 28" high)
20	Round cabaret tables (24" in diameter and 45" high)
100	Black chairs
26	barstools 38"
7	3' x 6' risers that can be used to make a small stage (9'X15') includes sets of legs, 8" and 16"

CURTAIN

1	Set of blackout curtains for the widows facing Saint-Laurent Boulevard
1	Set of black curtains to separate the Café in two sections

NOTE: Basic facilities are available onsite for caterers

LIGHTING EQUIPMENT

The venue is equipped with a fixed grid at a 14'-6" height.

24	Strand CPD1 Dimmers 3.6kW
24	Strand CD80 Dimmers
1	Strand 200S Console 24 channels
16	Lekos 575w Lekolite 2205
24	PAR ETC 575W – Medium
8	ParLED xFocus RGB Theatrinx
14	Colorblast TRX RGB

NOTE: The ambient lighting is permanently installed and cannot be reconfigured. All other lighting equipment needs to be set up and taken down after each event.

SOUND EQUIPMENT

- 1 Behringer XR18
- 4 QSC K10.2 (stereo in the front and two mono delay planes)
- 1 Yamaha DME 4io-e/s processor

- 2 Yamaha MSR 400 (movables)

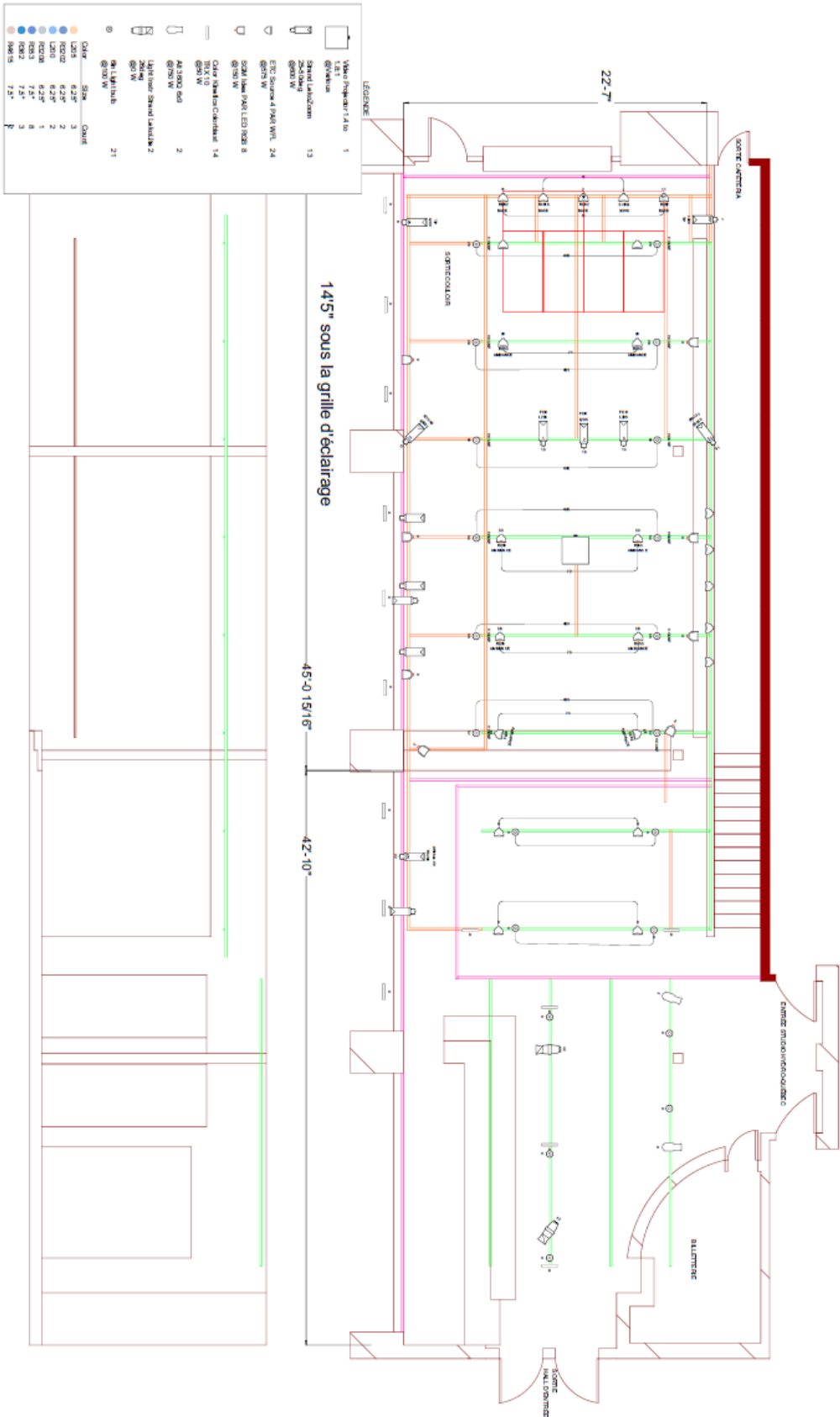
- 1 iPad controller with access to Spotify and Apple Music
- 1 Bluetooth receiver Denon DN-200BR (directly connected to DME processor)

- 1 GAODIMIC DS240 - 4 channels wireless receiver
- 4 GAODIMIC DS240 - Handheld wireless transmitter with M48 capsule

- 2 Shure SM-58
- 1 Radial Pro-DI
- 1 Radial Pro-AV2

PROJECTION EQUIPMENT

- 1 Panasonic projector PT-LMZ460
- 1 Projection screen 16' x 9'



The Monument-National forms one of two campuses of the National Theatre School of Canada.

- Located near the corner of Saint-Laurent and René-Lévesque Boulevards, it is within walking distance of both the Saint-Laurent and Place-d'Armes metro stations.
- The main entrance and Box Office are located at 1182 Saint-Laurent Boulevard; The reception staff and backstage entrance is located at 1170 Saint-Laurent Boulevard.
- It was built in 1893 and entirely renovated in 1993 for its centennial anniversary.